

Hydrologic Conditions Update

(graphics as of April 24, 2018)

Lois Ann Sorensen, M.B.A.

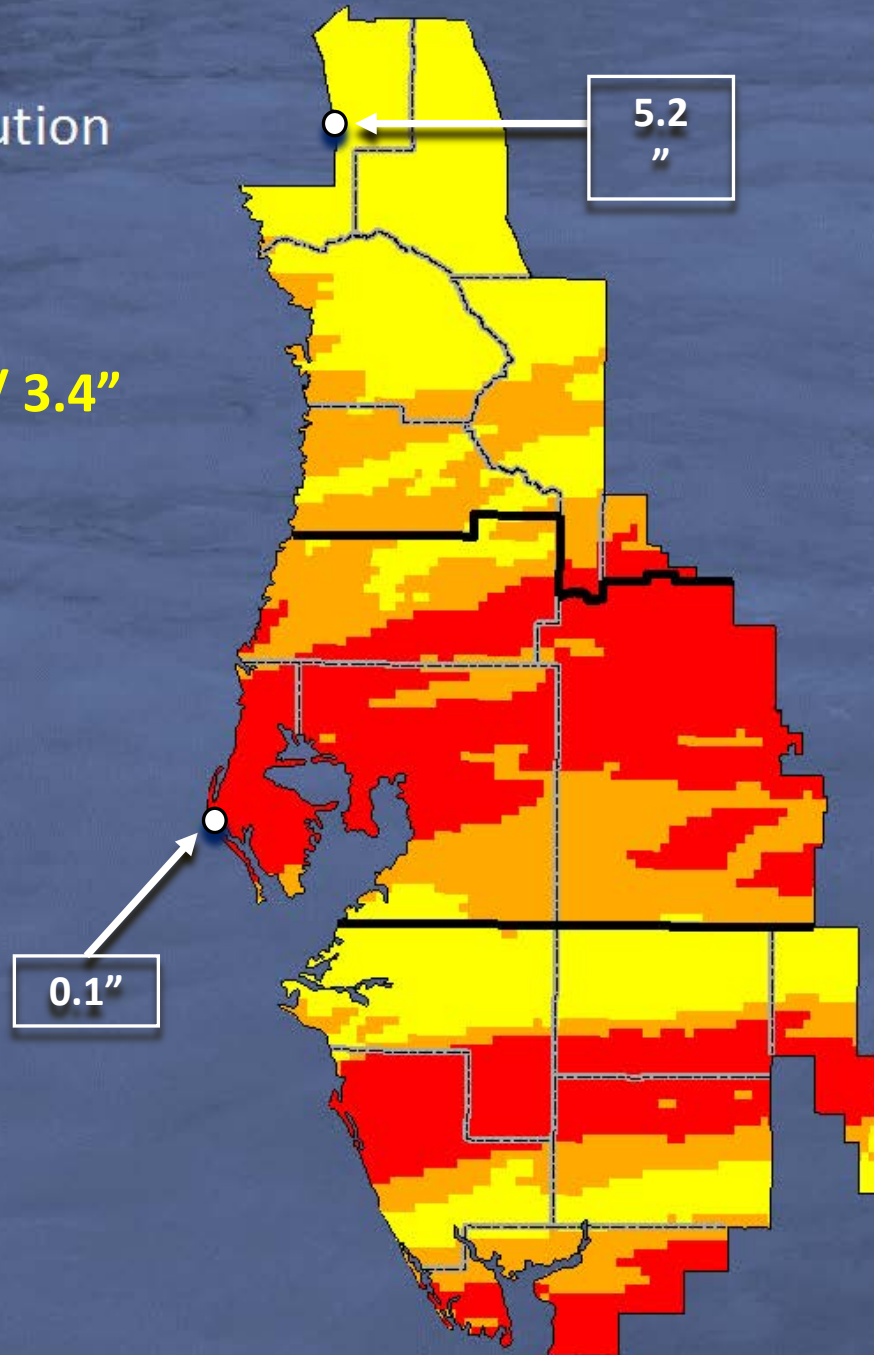
Program Manager – Demand Management

Regional Drought Response Process

- Each water management district is required, by state law, to have a “Water Shortage Plan”
- Chapter 40D-21, F.A.C.:
 - Four phases of restrictions/requirements (non-emergency board orders)
 - Implementation and emergency provisions
 - Monitor hydrologic conditions, other factors

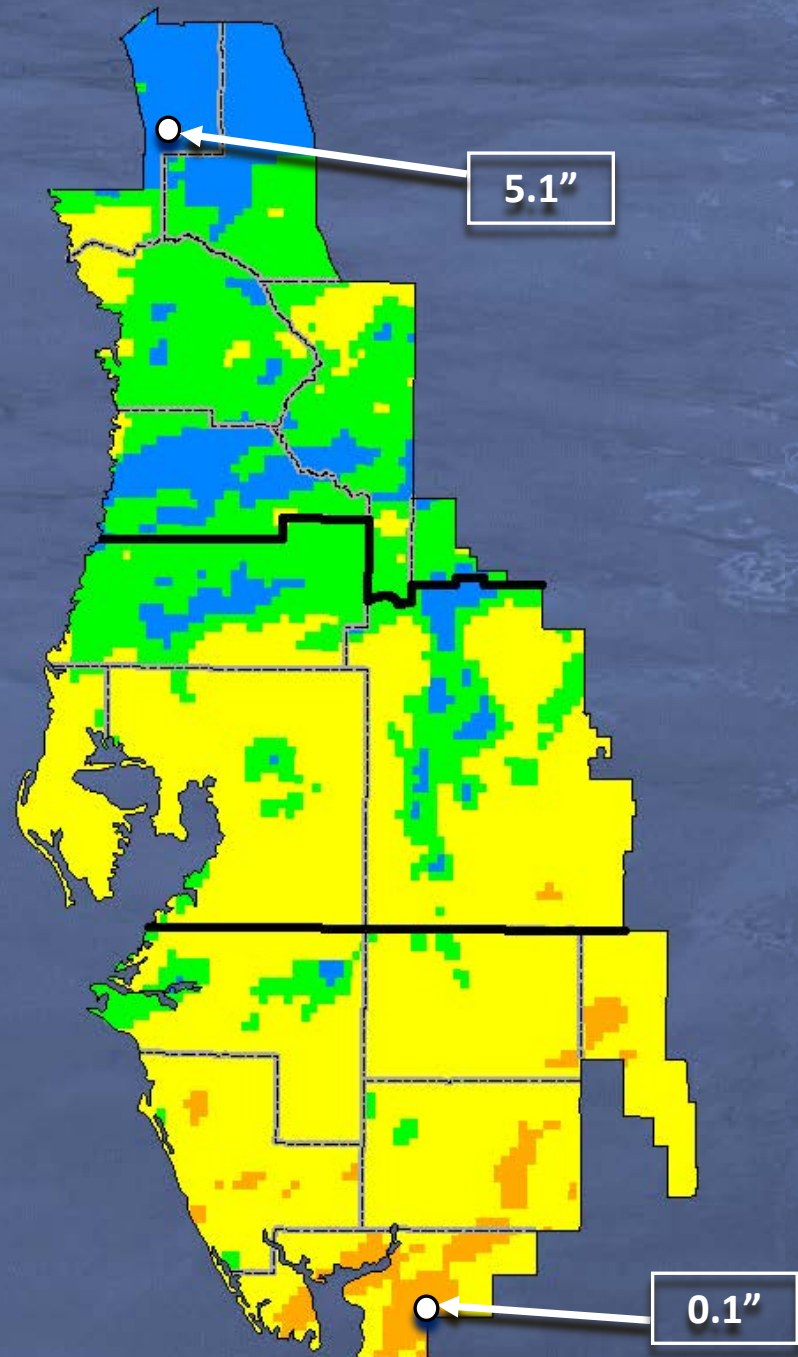
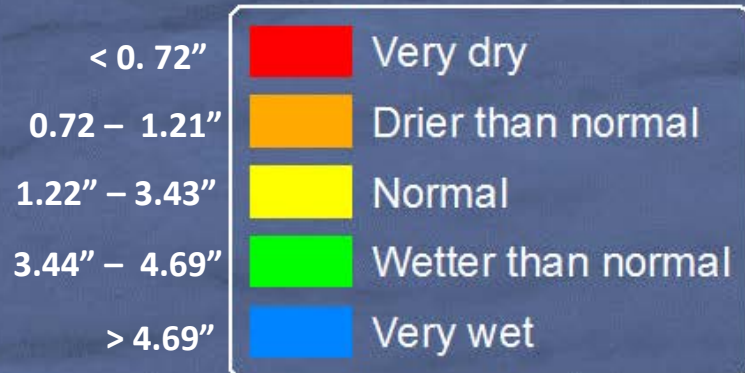
SWFWMD Rainfall Distribution March 2018

Mean Rainfall Received = 1.4" / 3.4"



SWFWMD Rainfall Distribution April 1-22, 2018

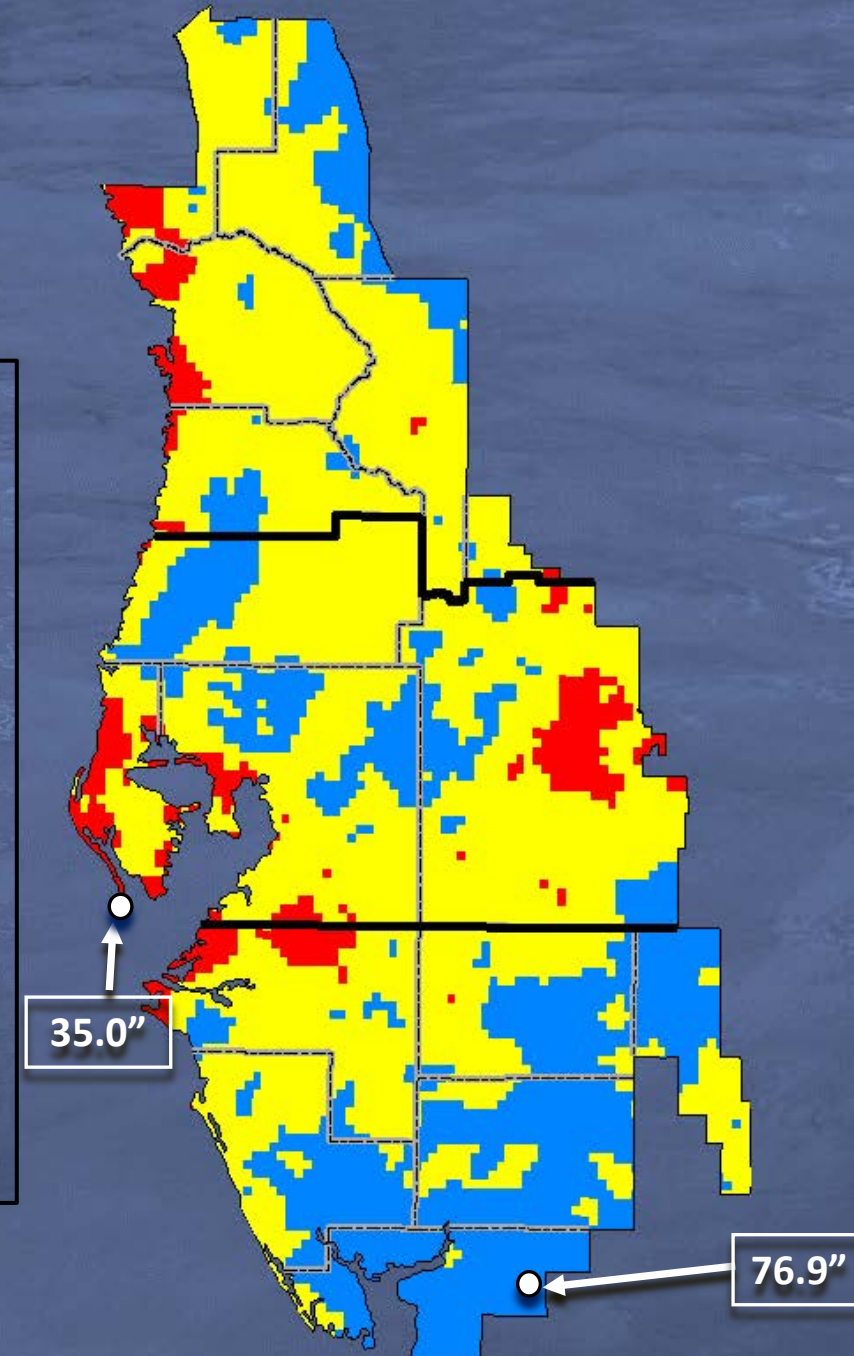
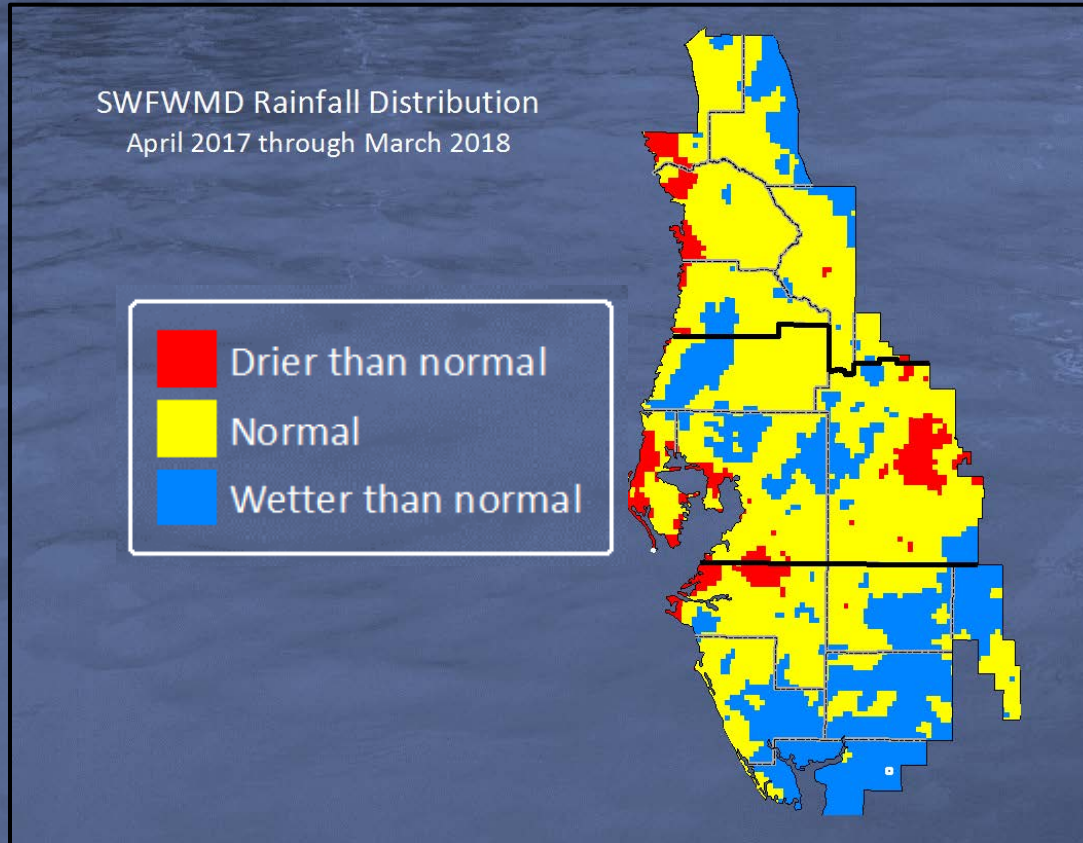
Mean Rainfall Received = 3.3" / 2.6"



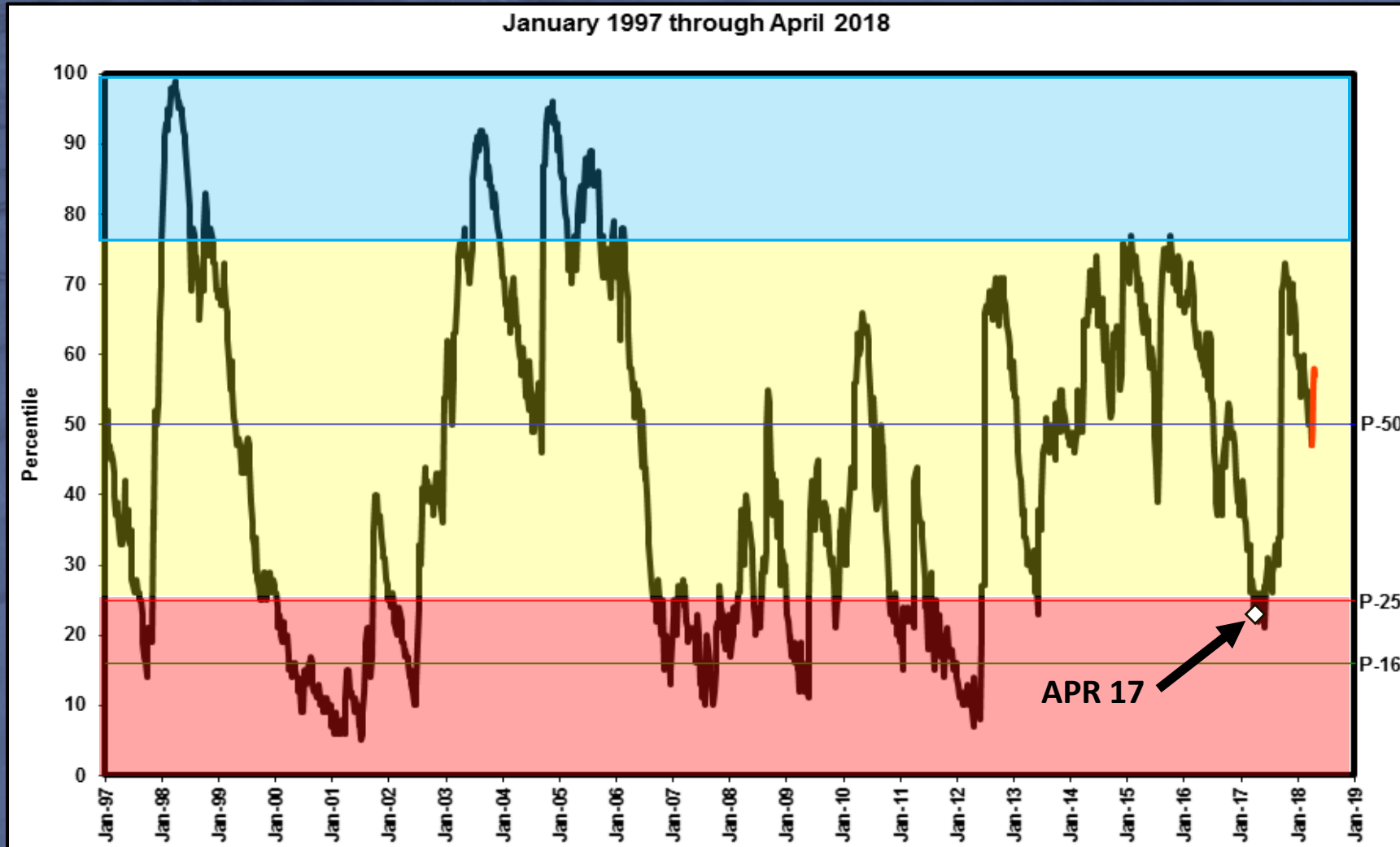
SWFWMD Rainfall Distribution

April 2017 through March 2018

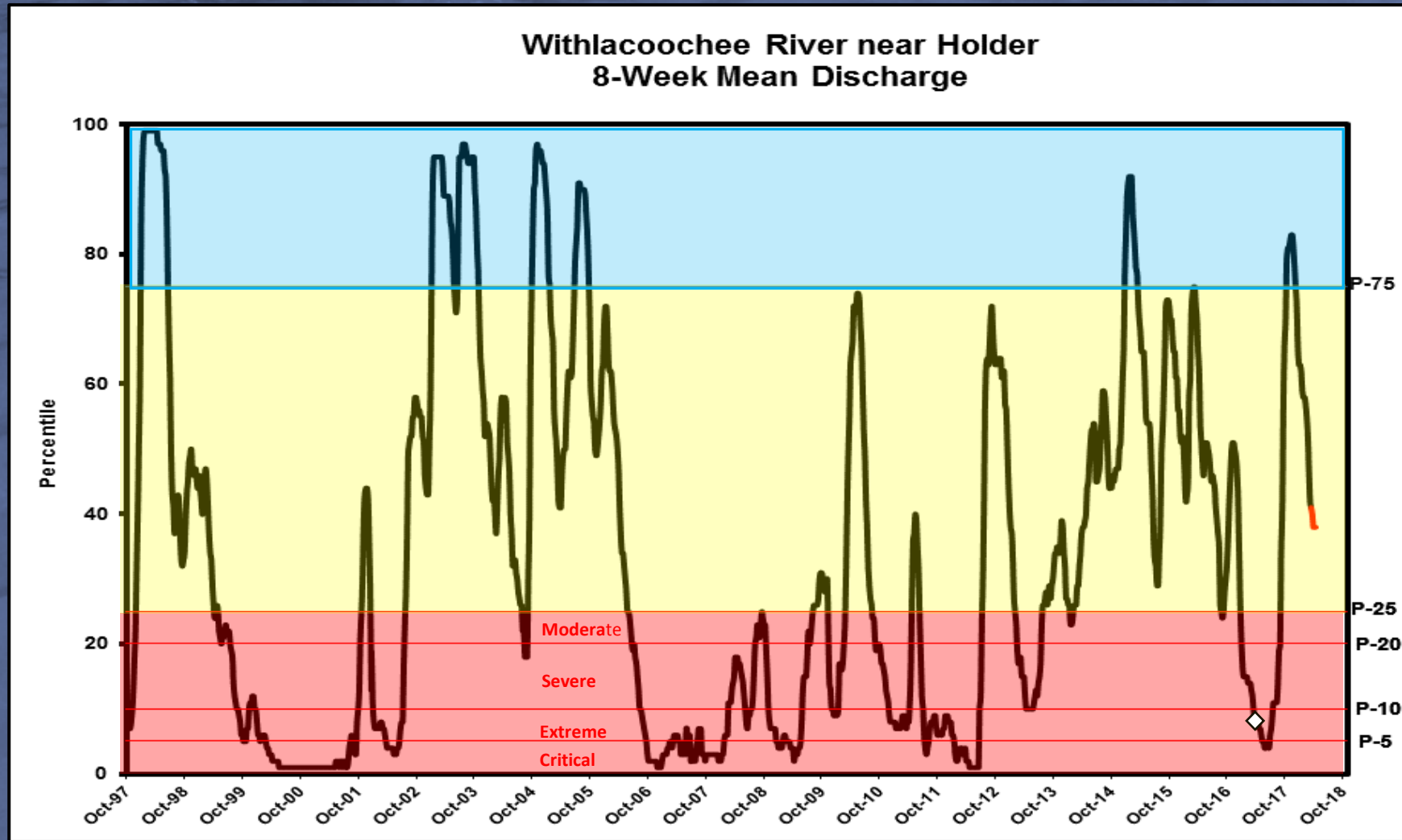
12-Month Rainfall



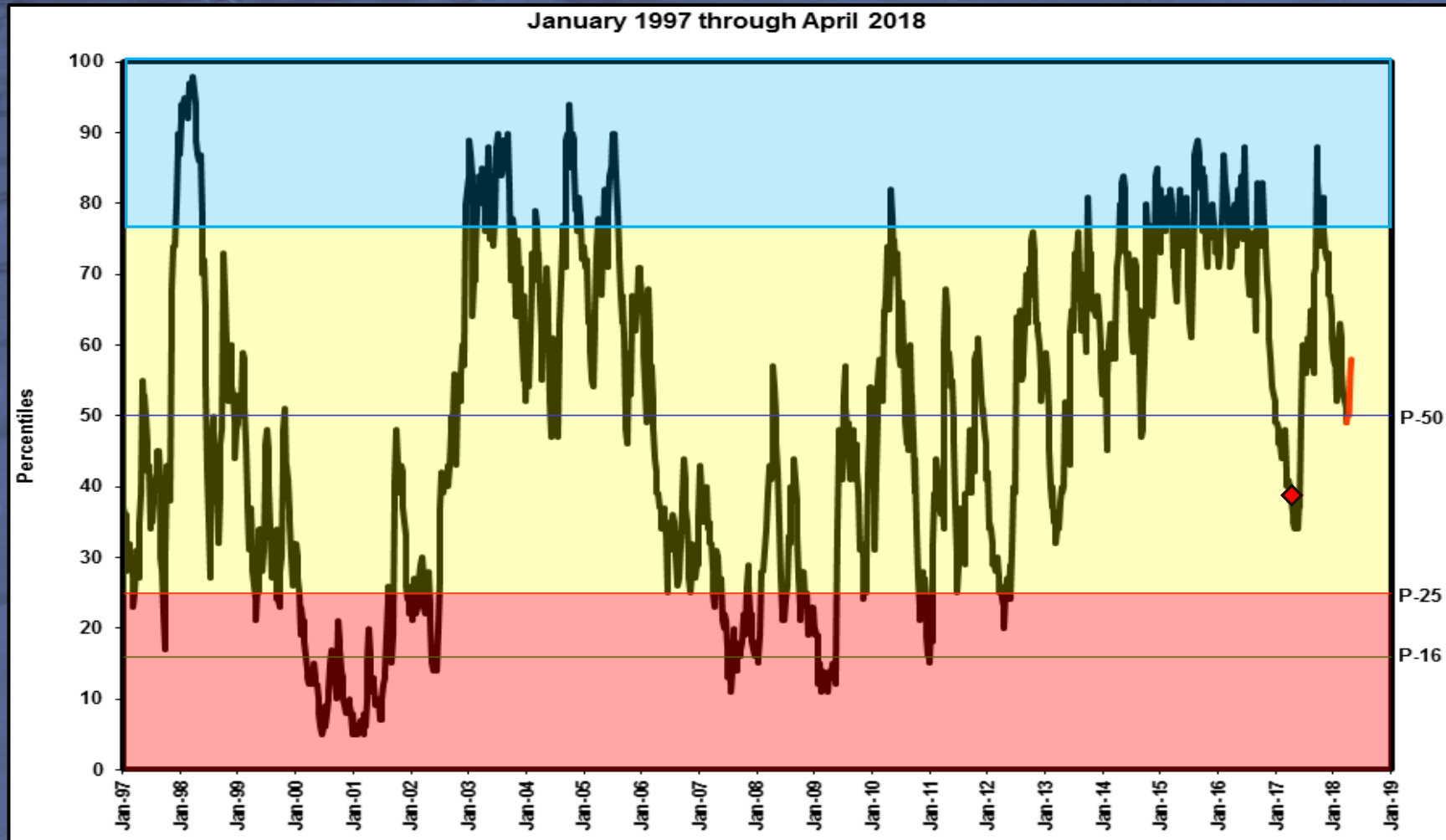
Groundwater Levels: Northern Counties



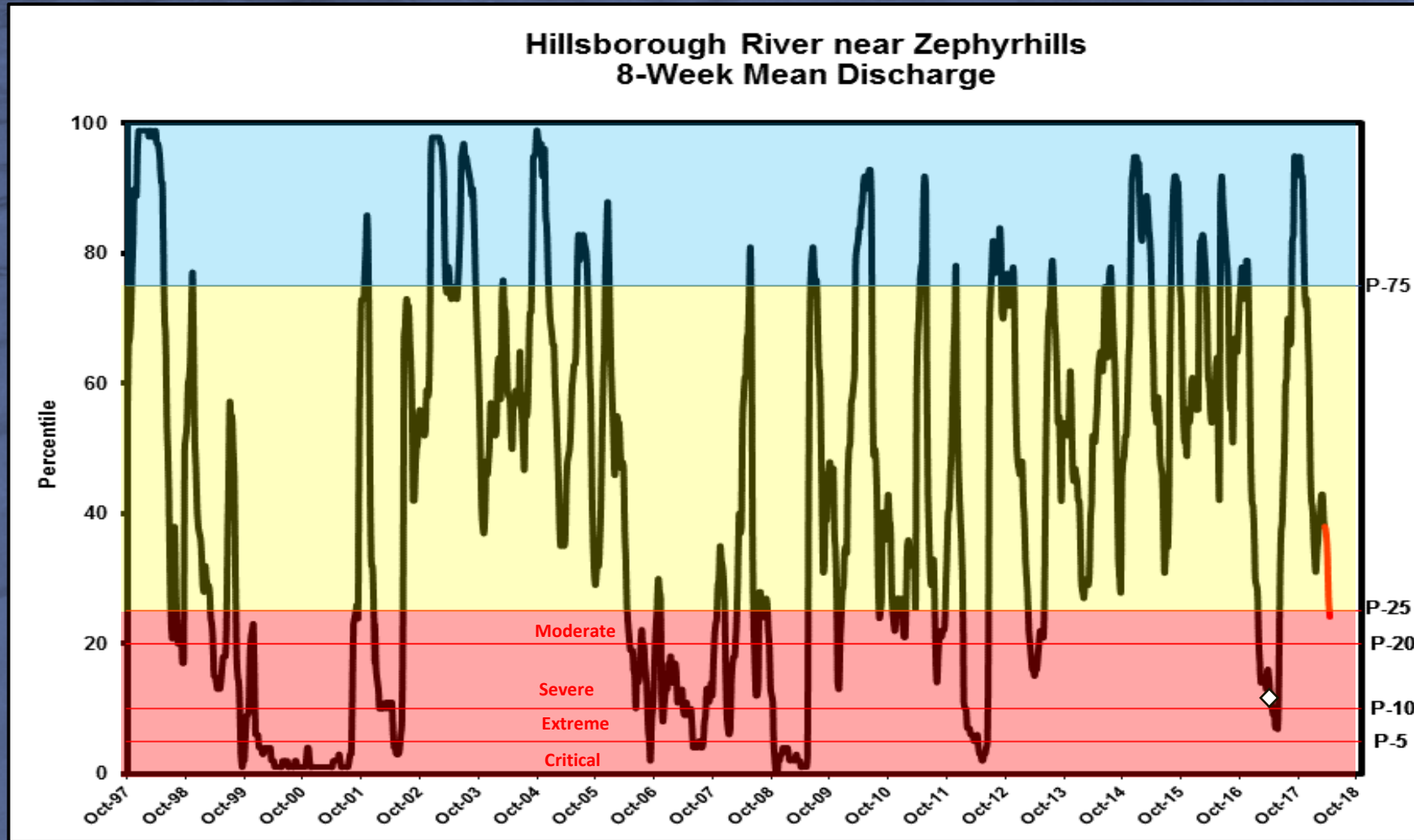
Surface Water Discharge: Withlacoochee River



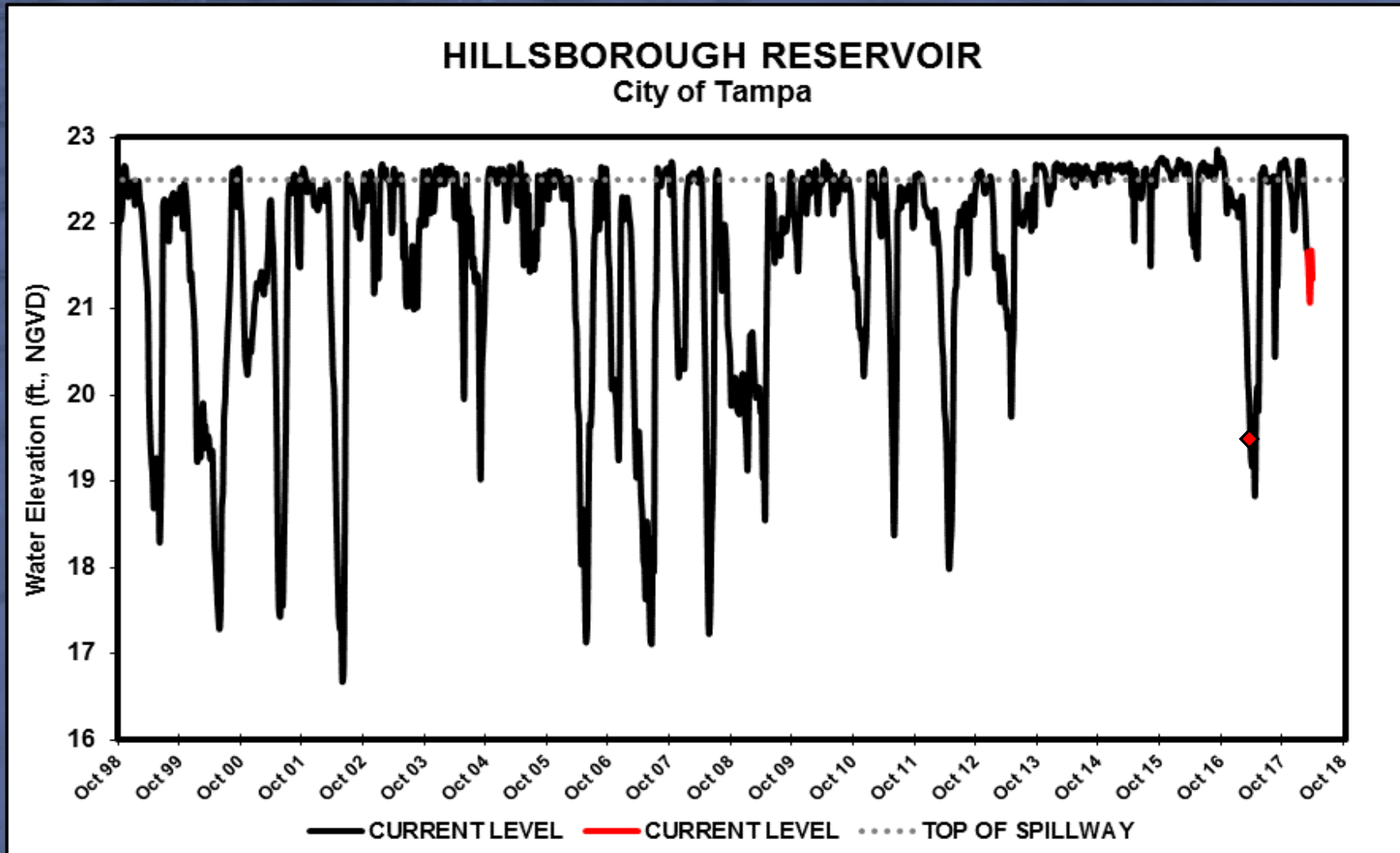
Groundwater Levels: Central Counties



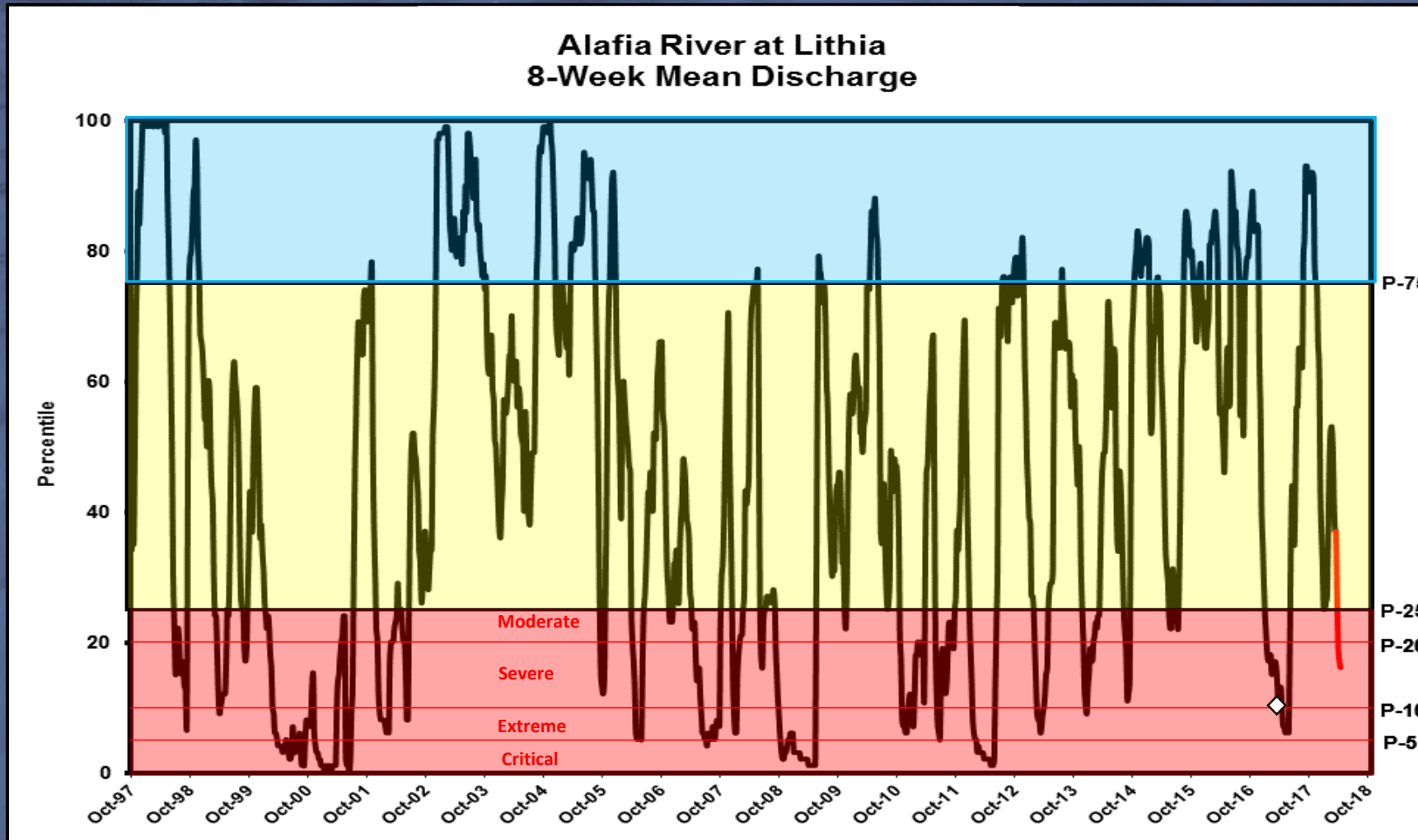
Surface Water Discharge: Hillsborough River



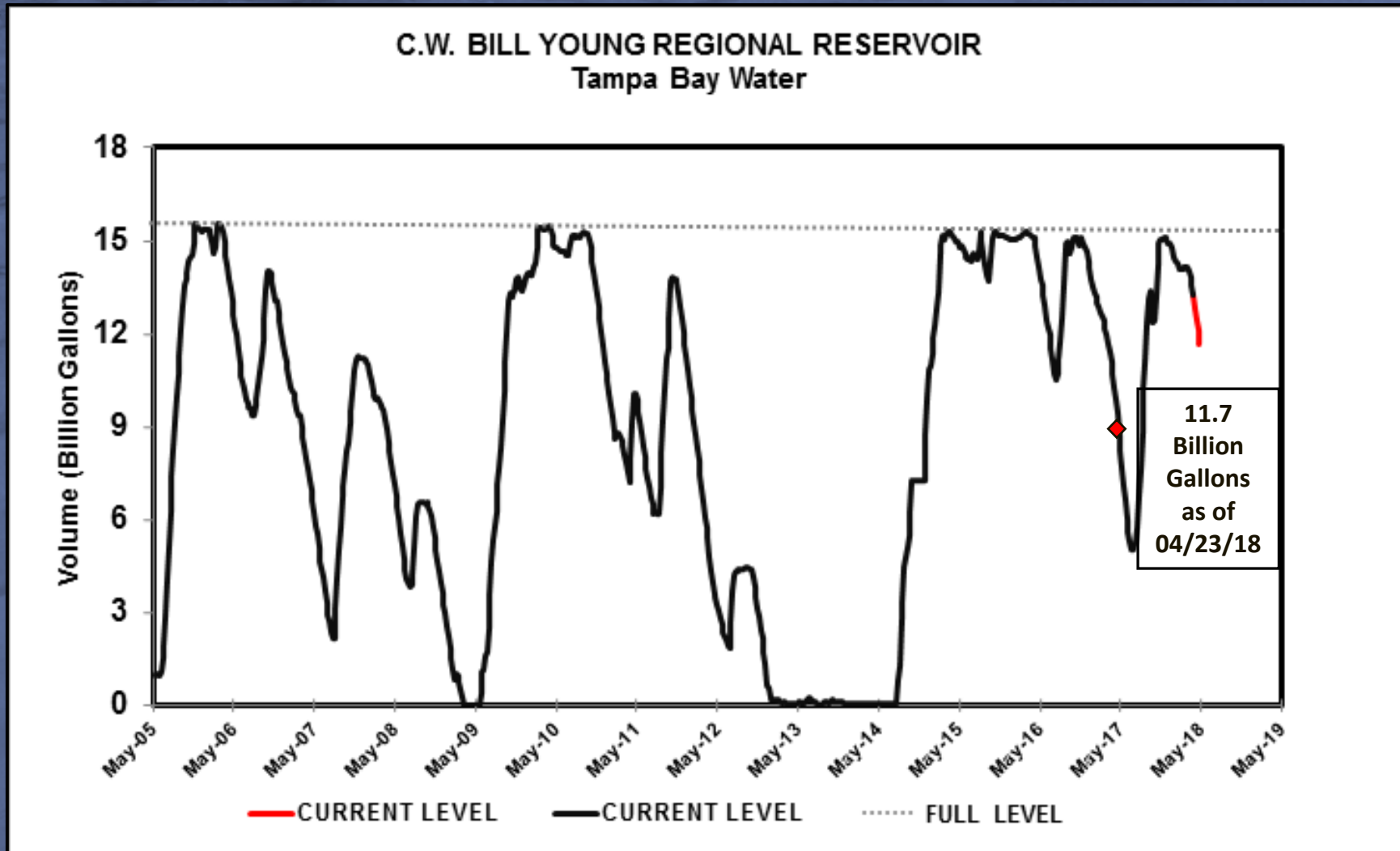
Public Supply Levels (*City of Tampa*)



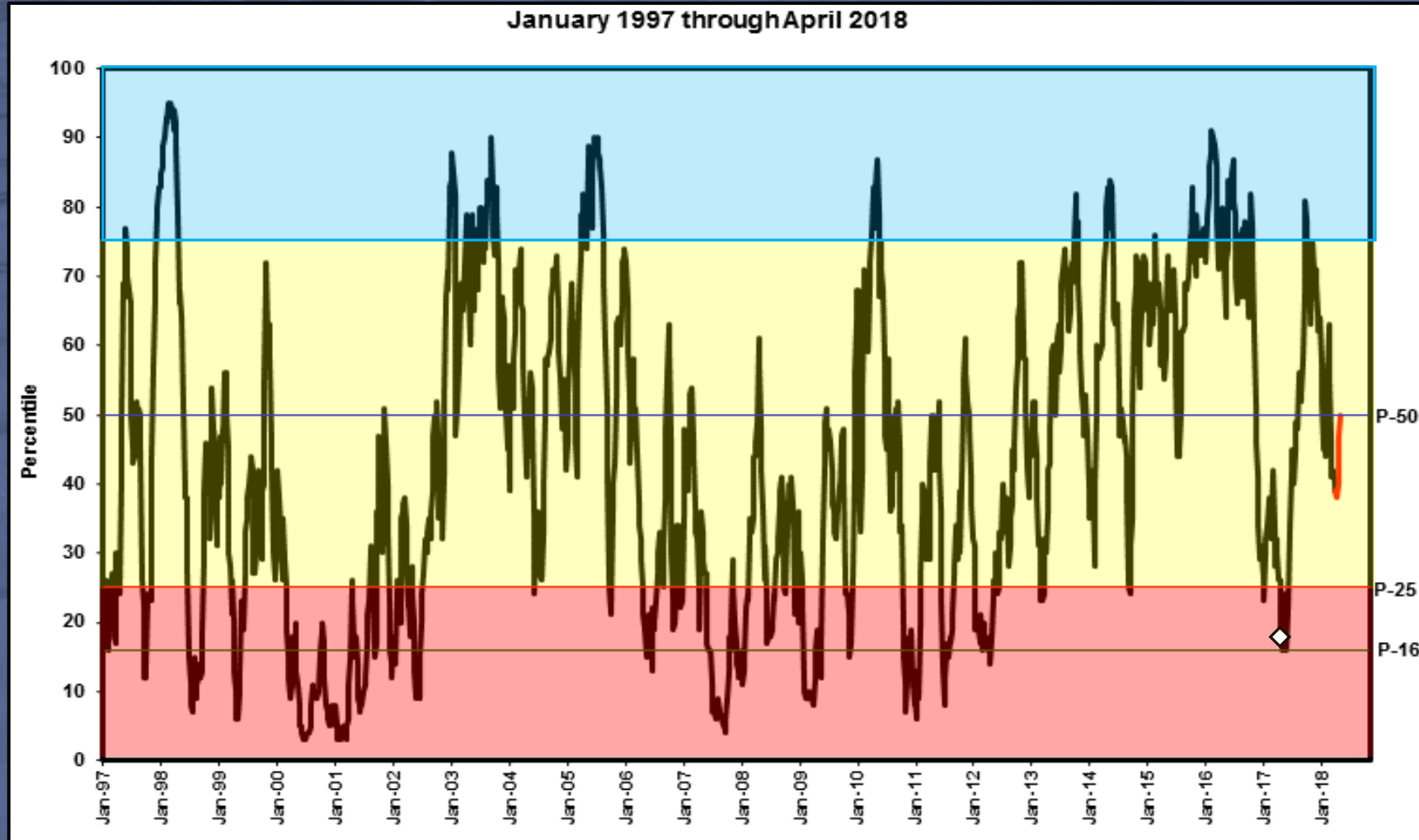
Surface Water Discharge: Alafia River



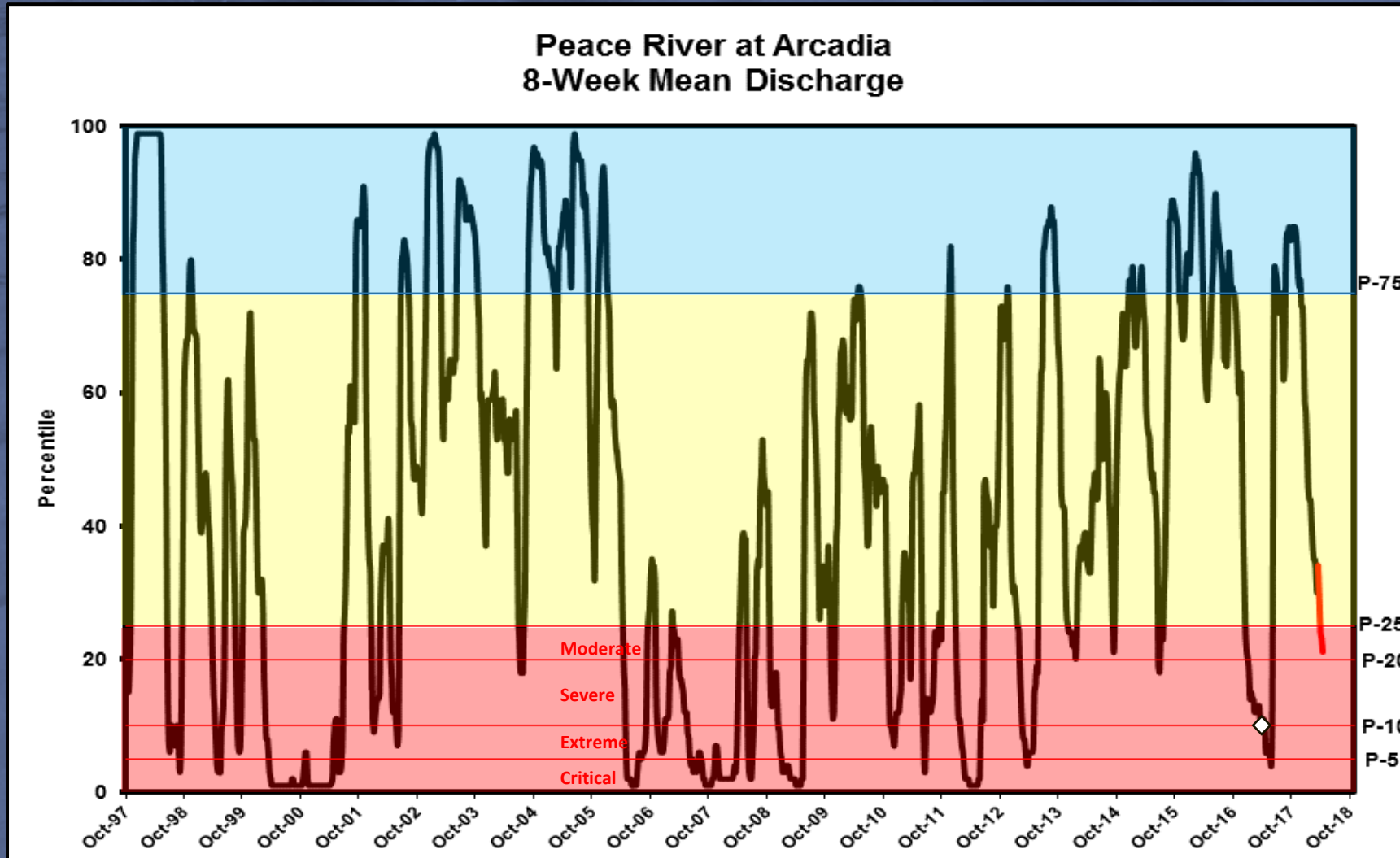
Public Supply Volume *(Hillsborough & Alafia Rivers)*



Groundwater Levels: Southern Counties

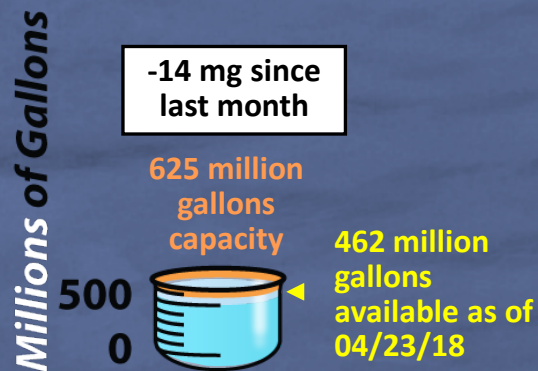


Surface Water Discharge: Peace River

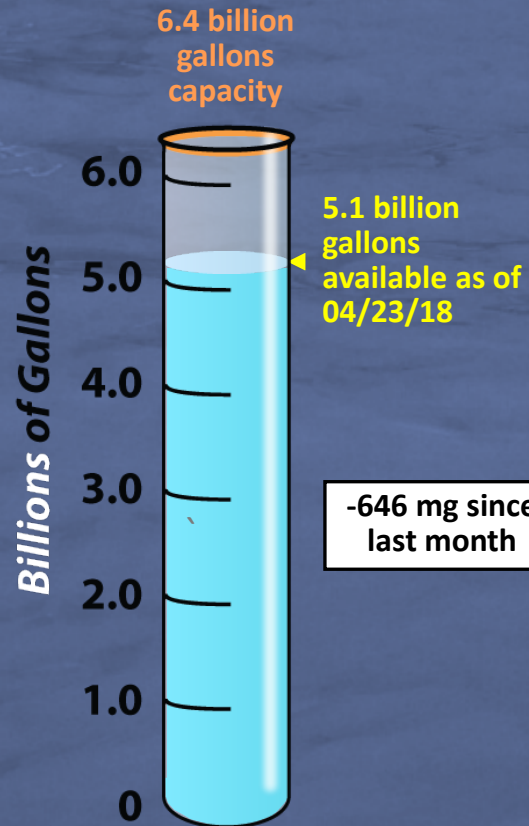


Public Supply Volume (Peace River)

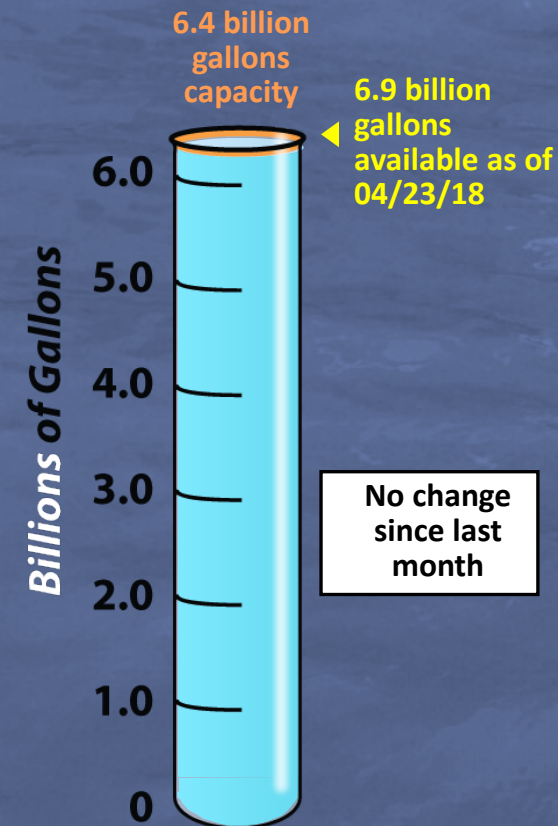
12.5 billion gallons
as of 04/23/18
= 492-day supply



Reservoir 1



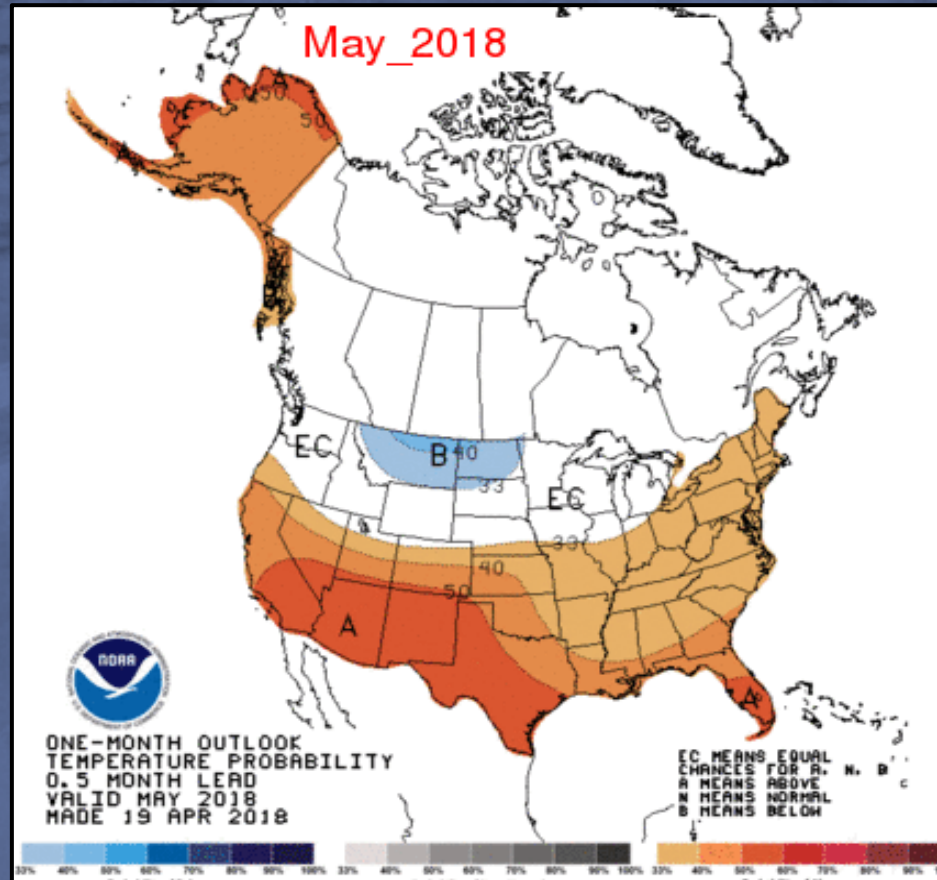
Reservoir 2



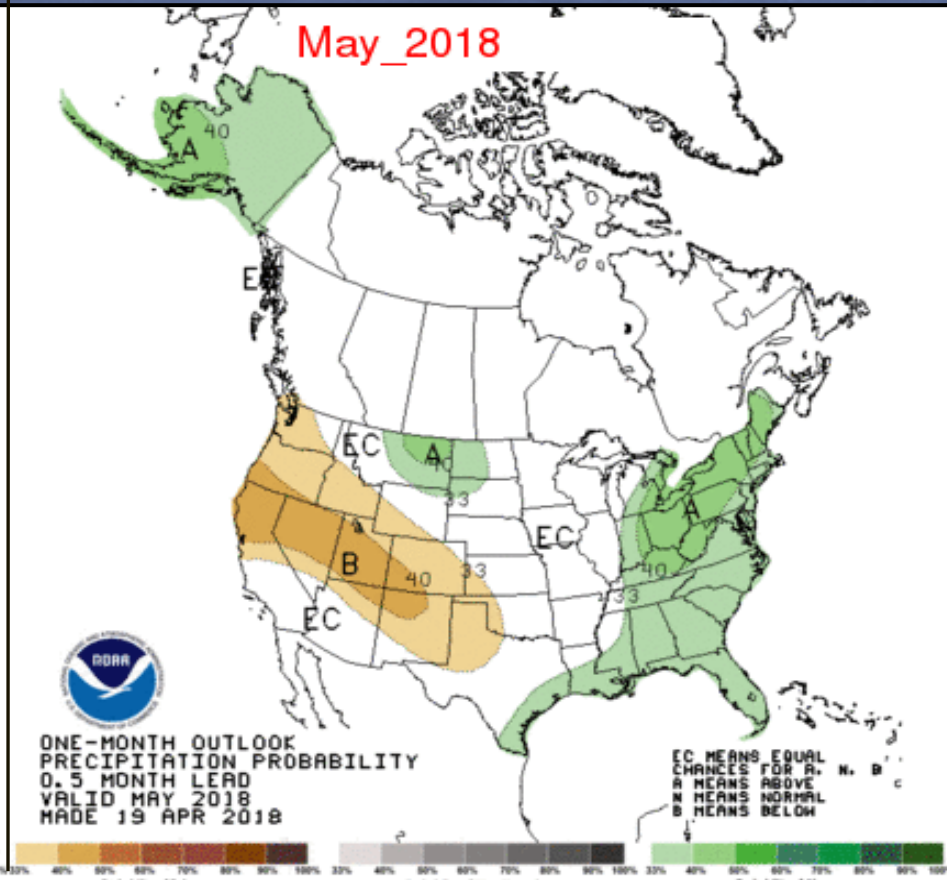
ASR Wellfield

Climate Forecast

Temperature Forecast



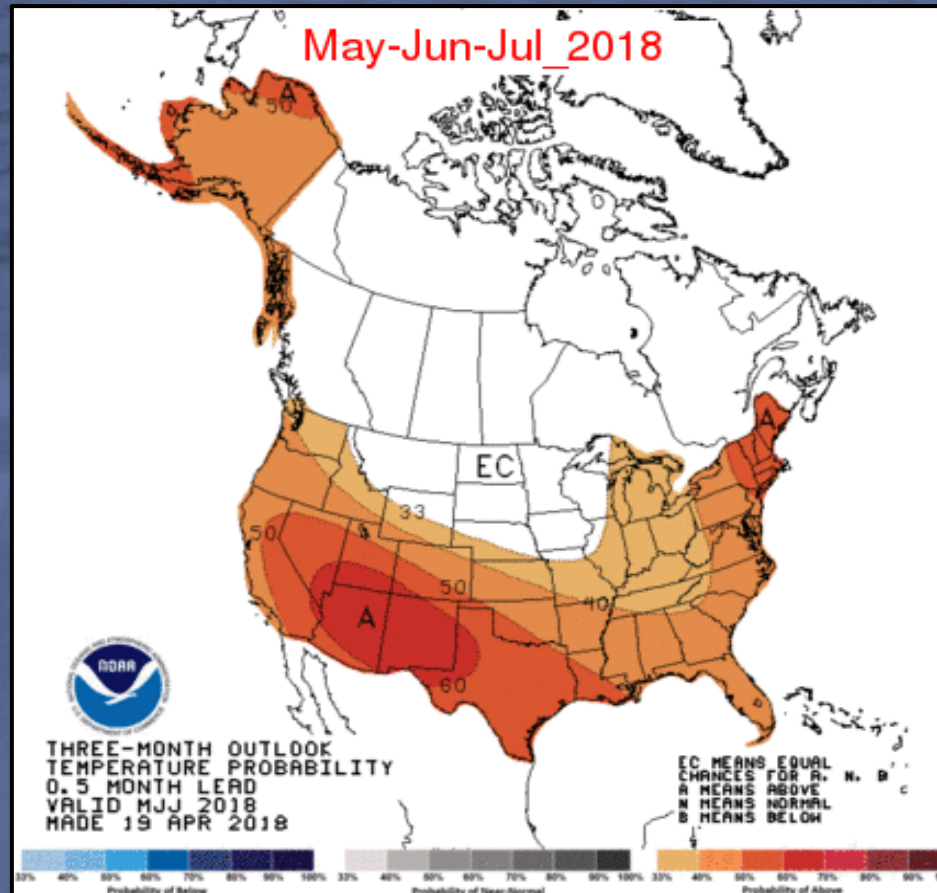
Precipitation Forecast



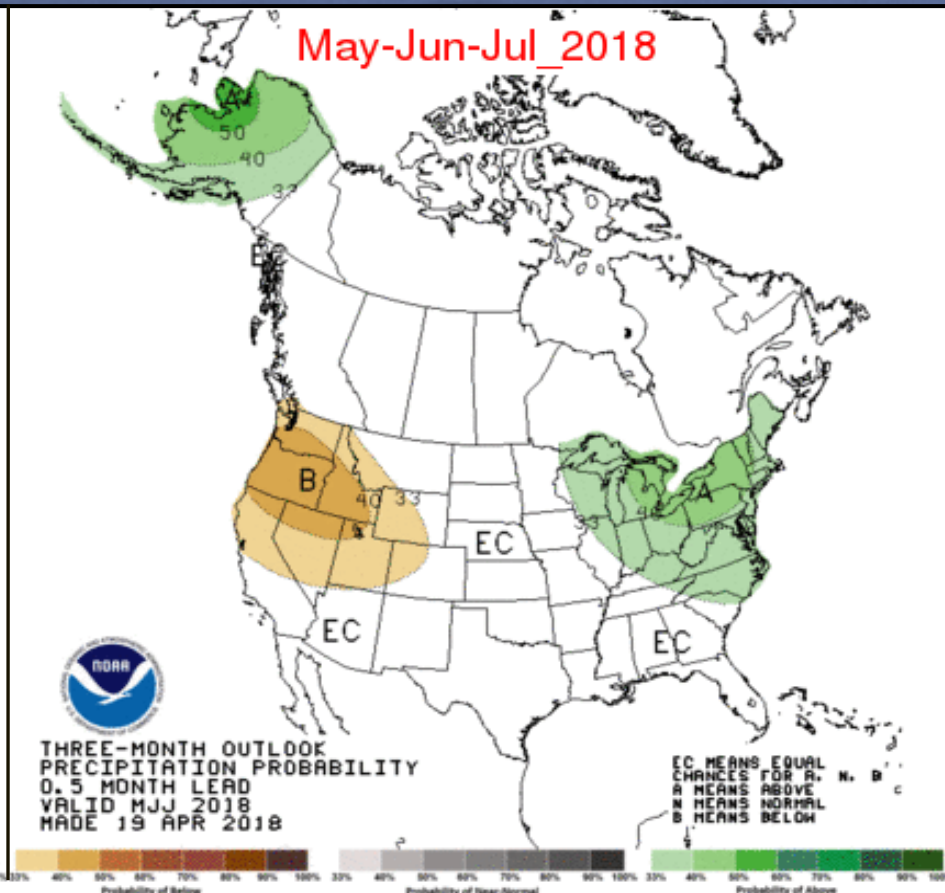
Source: Climate Prediction Center

Climate Forecast

Temperature Forecast



Precipitation Forecast



Source: Climate Prediction Center

Summary

- **Below-normal rainfall trend done?**
- **Weather forecasts are mixed**
- **Monitoring for drought conditions**
- **Public water supplies remain healthy**