

**Legend**

- Major Roads
- Future Water Demand Area
- City
- Agriculture
- Commercial
- Industry
- Recreation
- Residential
- Rural

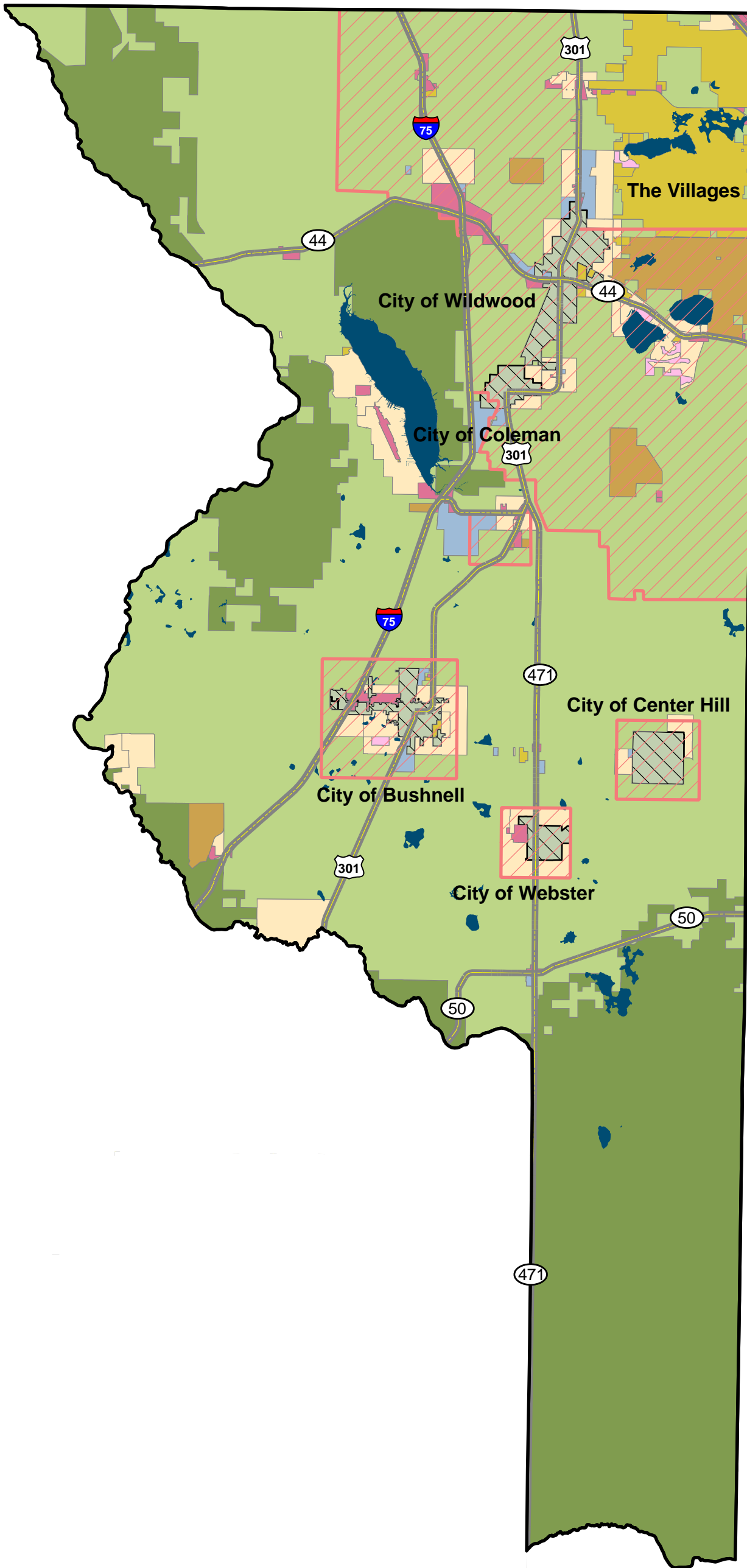
ORIGINAL DATE: 08-08-05
REVISION DATE: 12-08-05
JOB NUMBER: 0306
FILE NAME: Ocala Future Demand...
GIS OPERATOR: DFB

PROJECT: 0306 - Withlacoochee - RWSP Update

**Figure 2-3**  
Ocala Future Demand Areas

**Water Resource Associates, Inc.**  
 Engineering - Planning - Environmental Science  
 4260 West Linebaugh Avenue  
 Phone: 813-265-3130  
 Fax: 813-265-6610  
 www.wraconsultants.com





**Legend**

- Major Roads
- Sumter County Boundary
- Future Water Demand Areas
- City
- Agricultural
- Commercial
- Conservation
- Industrial
- Planned Development
- Recreational
- Residential
- Rural
- Water Bodies



**Water Resource Associates, Inc.**  
 Engineering - Planning - Environmental Science  
 4260 West Linebaugh Avenue  
 Phone: 813-265-3130  
 Fax: 813-265-6610  
 www.wraconsultants.com

PROJECT: 0306 - Withlacoochee - RWSP Update

**Figure 2-4**  
**Sumter County**  
**Future Demand Areas**

ORIGINAL DATE: 10-27-05

REVISION DATE: NA

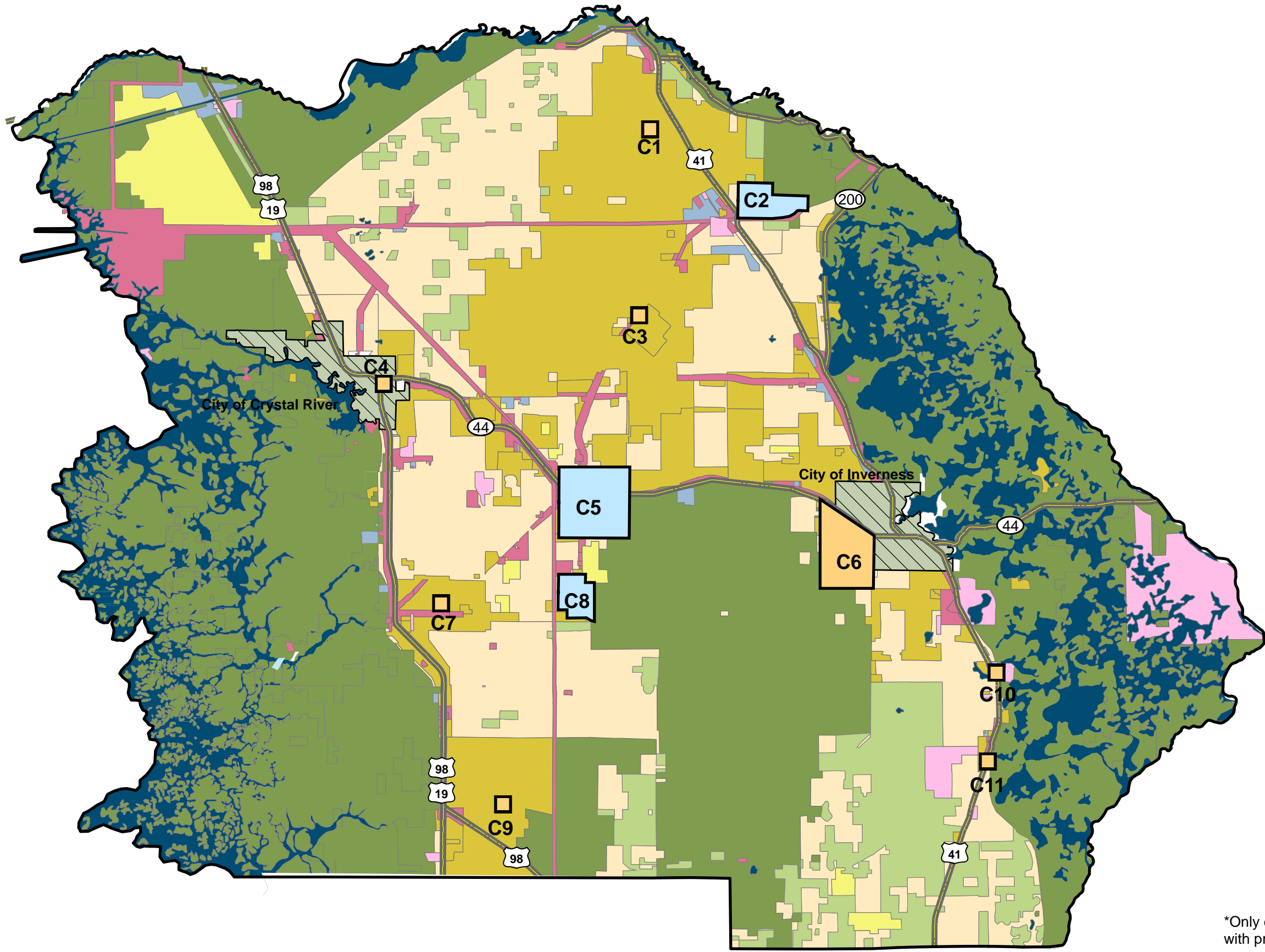
JOB NUMBER: 0306

FILE NAME: Sumter Future Demand...

GIS OPERATOR: DFB

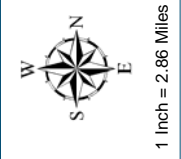


1 Inch = 3.39 Miles



**Legend**

- Major Roads
- Citrus County Boundary
- Existing Groundwater Sources\*
- Proposed Groundwater Sources
- City
- Agricultural
- Commercial
- Conservation
- Industrial
- Mining
- Recreational
- Residential
- Rural
- Water Bodies



1 Inch = 2.86 Miles

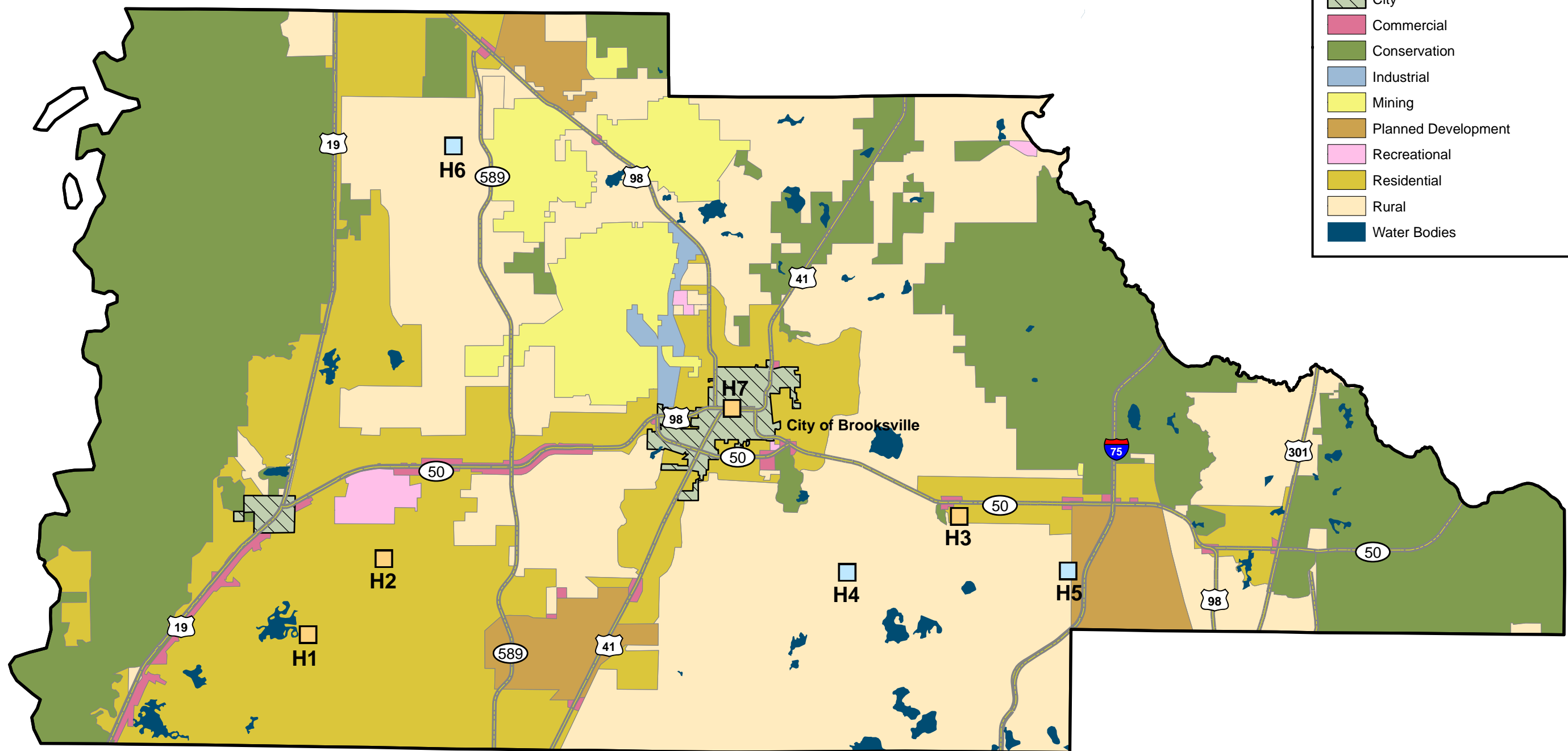
PROJECT: Withaloochee Regional Water Supply Authority - RWSPU - 2005 ORIGINAL DATE: 10-18-05  
 REVISION DATE: 10-27-05  
 JOB NUMBER: 0306  
 FILE NAME: Citrus Future Demand...  
 GIS OPERATOR: DFB

**Figure 2-5**  
**Citrus County Existing and Proposed**  
**Groundwater Source Areas**

**Water Resource Associates, Inc.**  
 Engineering - Planning - Environmental Science  
 4260 West Linebaugh Avenue  
 Phone: 813-265-3130  
 Fax: 813-265-6610  
 www.wraconsultants.com



\*Only existing groundwater source areas with projected demand increases are shown



**Legend**

- Major Roads
- Hernando County Boundary
- Existing Groundwater Sources\*
- Proposed Groundwater Sources
- City
- Commercial
- Conservation
- Industrial
- Mining
- Planned Development
- Recreational
- Residential
- Rural
- Water Bodies



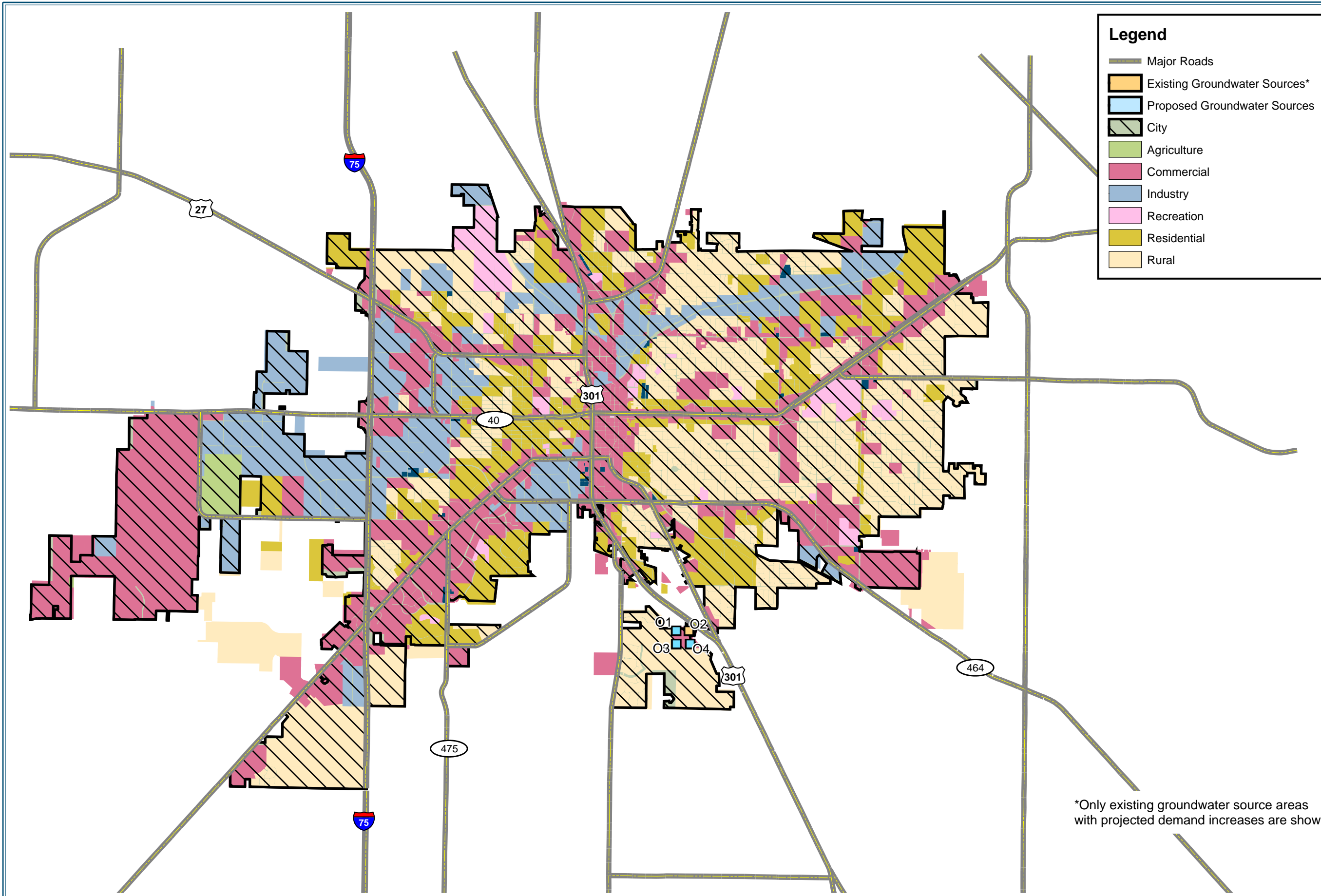
ORIGINAL DATE: 10-27-05  
 REVISION DATE: NA  
 JOB NUMBER: 0306  
 FILE NAME: Hernando Future Dema...  
 GIS OPERATOR: DFB

PROJECT: 0306 - Withlacoochee - RWSP Update  
 Figure 2-6  
 Hernando County Existing and Proposed  
 Groundwater Source Areas

Water Resource Associates, Inc.  
 Engineering - Planning - Environmental Science  
 4260 West Linebaugh Avenue  
 Phone: 813-265-3130  
 Fax: 813-265-6610  
 www.wraconsultants.com



\*Only existing groundwater source areas with projected demand increases are shown



\*Only existing groundwater source areas with projected demand increases are shown

**Legend**

- Major Roads
- Existing Groundwater Sources\*
- Proposed Groundwater Sources
- City
- Agriculture
- Commercial
- Industry
- Recreation
- Residential
- Rural

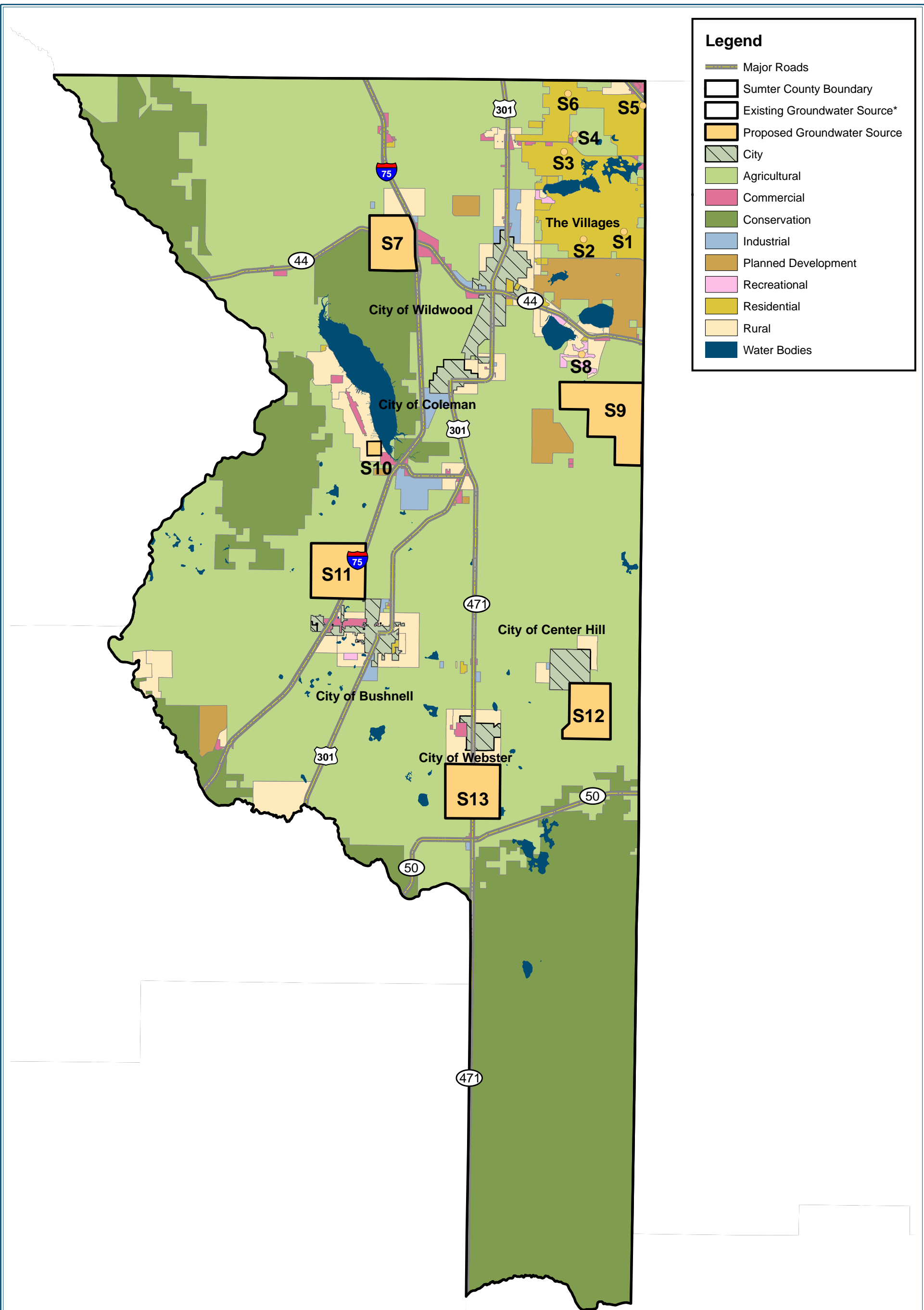


ORIGINAL DATE: 08-08-05  
 REVISION DATE: 12-08-05  
 JOB NUMBER: 0306  
 FILE NAME: Ocala Future PGWS...  
 GIS OPERATOR: DFB

PROJECT: 0306 - Withlacoochee - RWSP Update  
**Figure 2-7**  
**Ocala Existing and Proposed**  
**Groundwater Source Areas**

**Water Resource Associates, Inc.**  
 Engineering - Planning - Environmental Science  
 4260 West Linebaugh Avenue  
 Phone: 813-265-3130  
 Fax: 813-265-6610  
 www.wraconsultants.com





**Legend**

- Major Roads
- Sumter County Boundary
- Existing Groundwater Source\*
- Proposed Groundwater Source
- City
- Agricultural
- Commercial
- Conservation
- Industrial
- Planned Development
- Recreational
- Residential
- Rural
- Water Bodies

\*Only existing groundwater source areas with projected demand increases are shown



**Water Resource Associates, Inc.**  
 Engineering - Planning - Environmental Science  
 4260 West Linebaugh Avenue  
 Phone: 813-265-3130  
 Fax: 813-265-6610  
 www.wraconsultants.com

PROJECT: 0306 - Withlacoochee - RWSP Update

**Figure 2-8**  
**Sumter County Existing and Proposed**  
**Groundwater Source Areas**

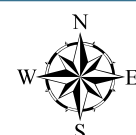
ORIGINAL DATE: 10-27-05

REVISION DATE: NA

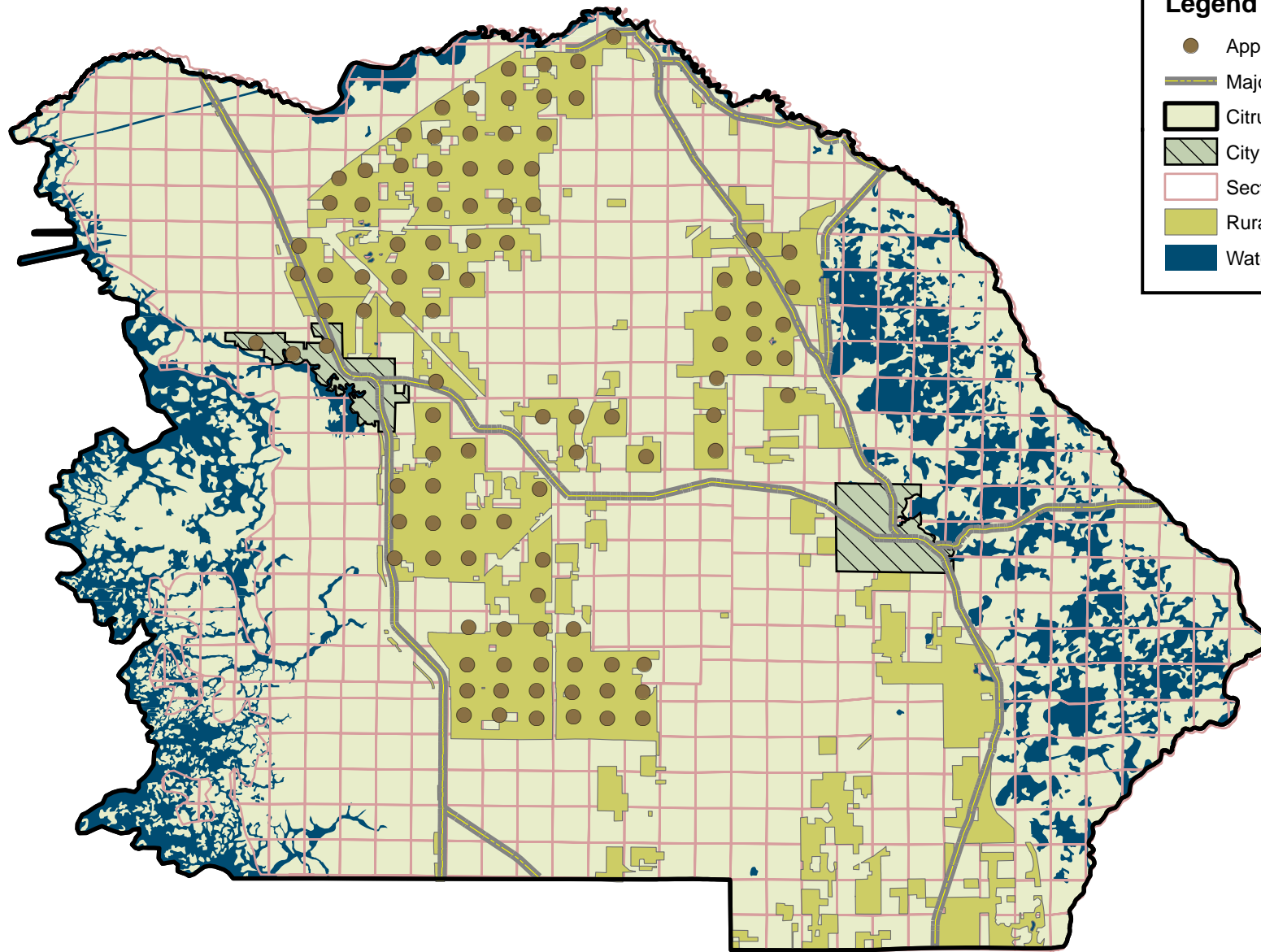
JOB NUMBER: 0306

FILE NAME: Sumter Future Demand...

GIS OPERATOR: DFB



1 Inch = 3.39 Miles



**Legend**

- Approx. DSS Withdrawal Pts.
- Major Roads
- Citrus County
- ▨ City
- Section Lines
- Rural
- Water Bodies

PROJECT: 0306 - Withlacoochee - RWSP Update

**Figure 2-9**  
**Change In Citrus County Domestic Self**  
**Supply Water Use From 2005 To 2025**

ORIGINAL DATE: 04-20-06

REVISION DATE: none

JOB NUMBER: 0306

FILE NAME: Citrus DSS Change.mxd

GIS OPERATOR: DFB



1 Inch = 9 Miles



**Water Resource Associates, Inc.**  
*Engineering ~ Planning ~ Environmental Science*  
 4260 West Linebaugh Avenue  
 Phone: 813-265-3130  
 Fax: 813-265-6610  
 www.wraconsultants.com