

# **SJRWMD Water Supply Planning Update**

**Withlacoochee Regional Water Supply Authority Board  
Feb. 17, 2016**

**Ann B. Shortelle, Ph.D.  
Executive Director**

**Louis J. Donnangelo  
Regional Water Supply Planning  
Coordinator**

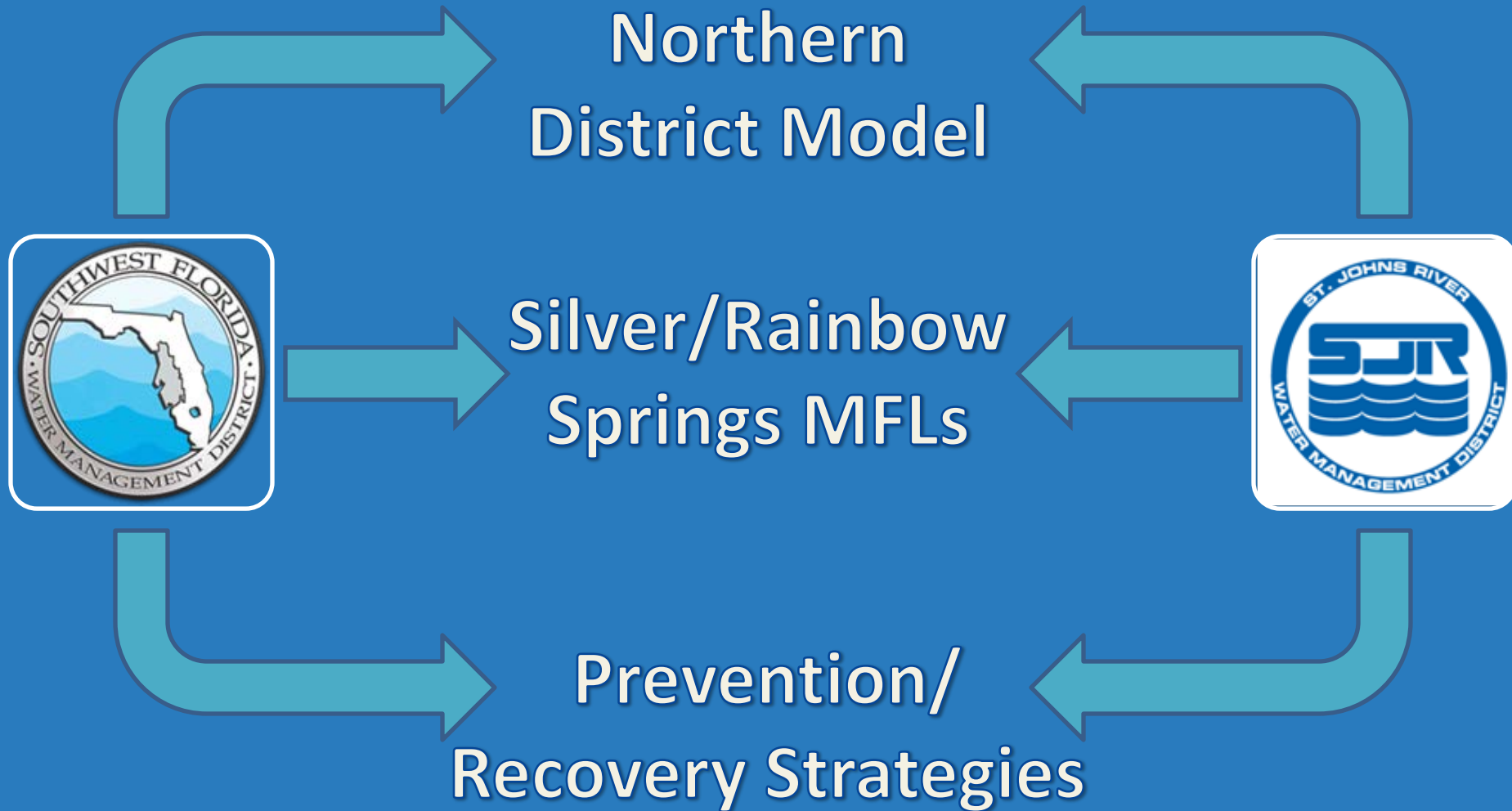


# SJRWMD Planning Priorities

- Active and ongoing collaboration with adjacent districts
- Proactive approach to planning
- Stakeholder involvement prior to, during, and post plan development
- Project funding assistance through aggressive cost-share program

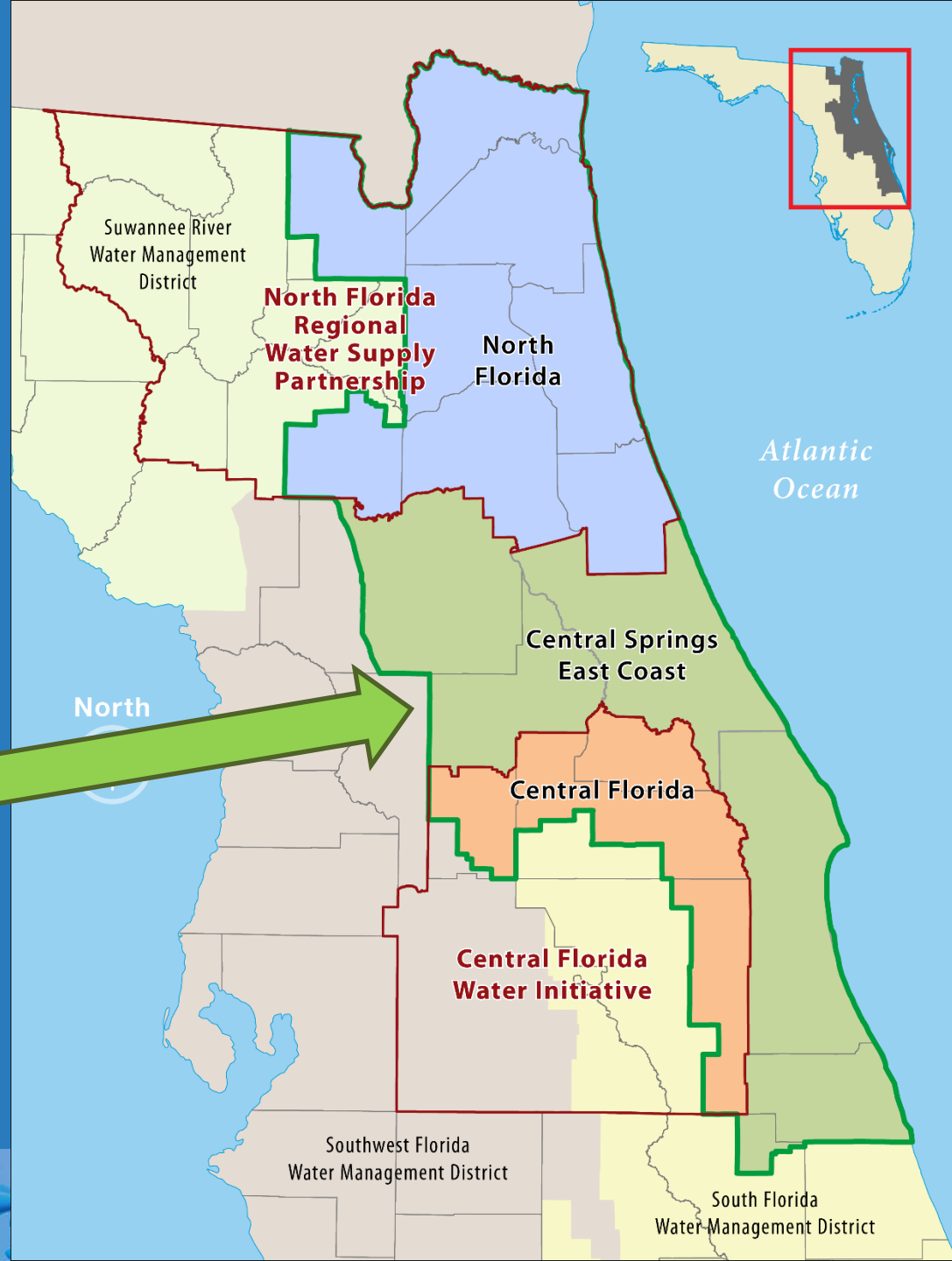


# District Collaboration

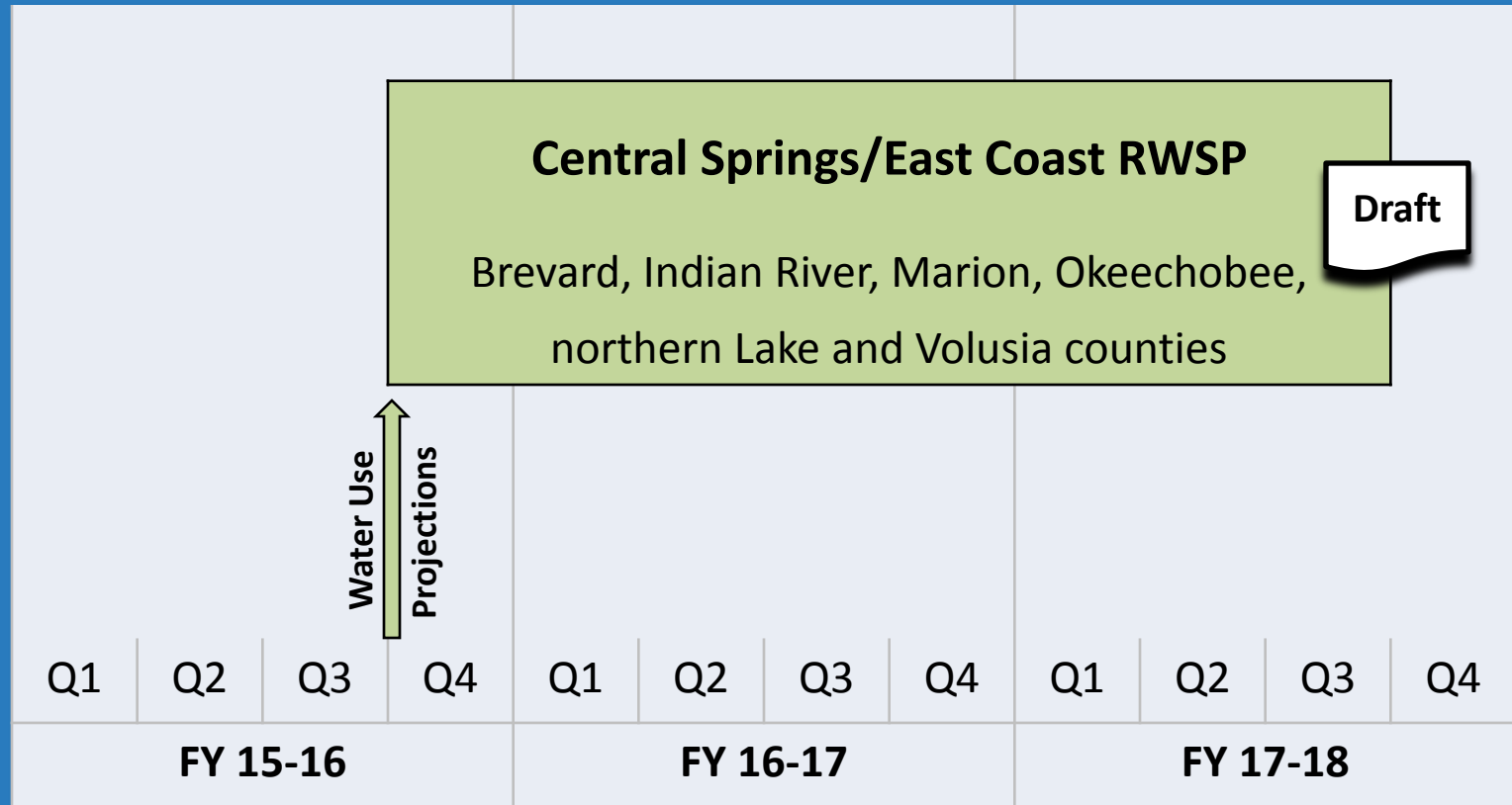


# SJRWMD Water Supply Planning Regions

- North Florida Regional Water Supply Partnership Planning Region
- **Central Springs/East Coast Regional Water Supply Planning Region**
- Central Florida Water Initiative Planning Region

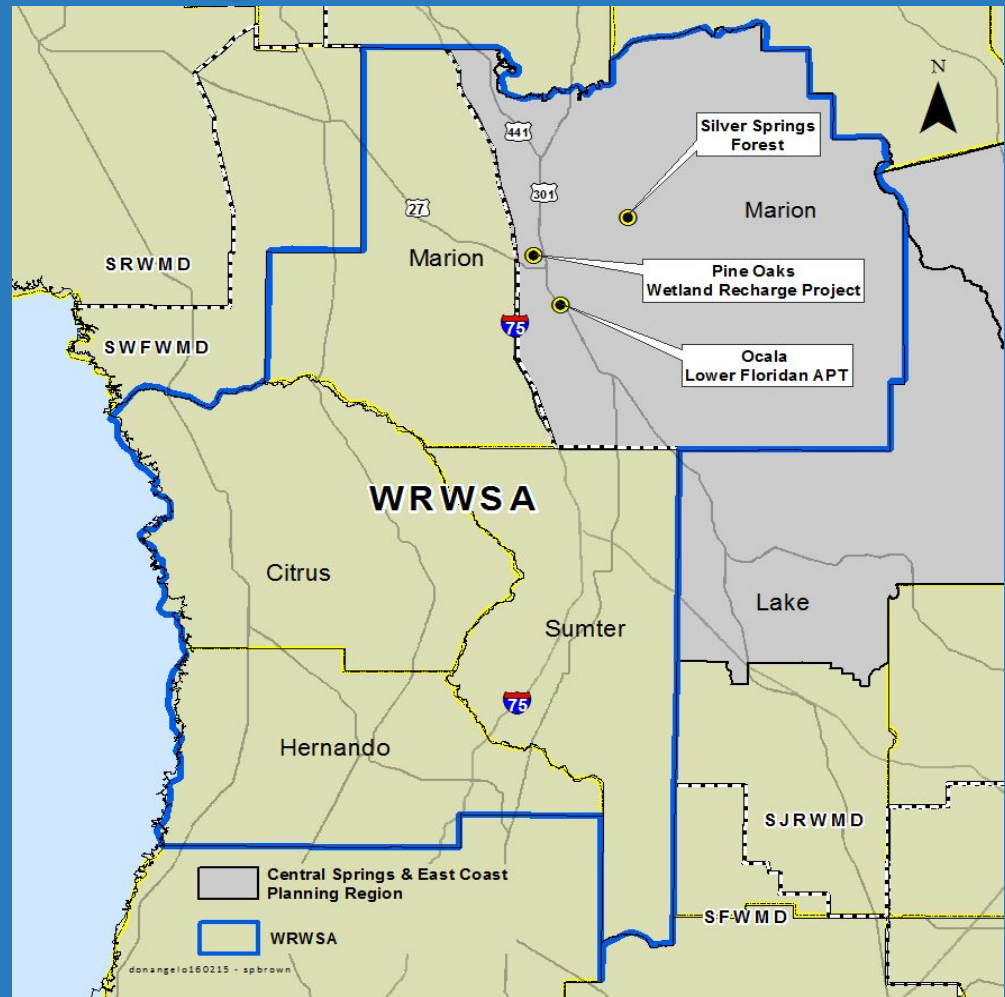


# Central Springs/East Coast RWSP Timeline



# Planning Efforts in Marion County

- Ocala Lower Floridan aquifer APT
- Marion County Lower Floridan aquifer APT
- Ocala Pine Oaks Wetland Recharge Park



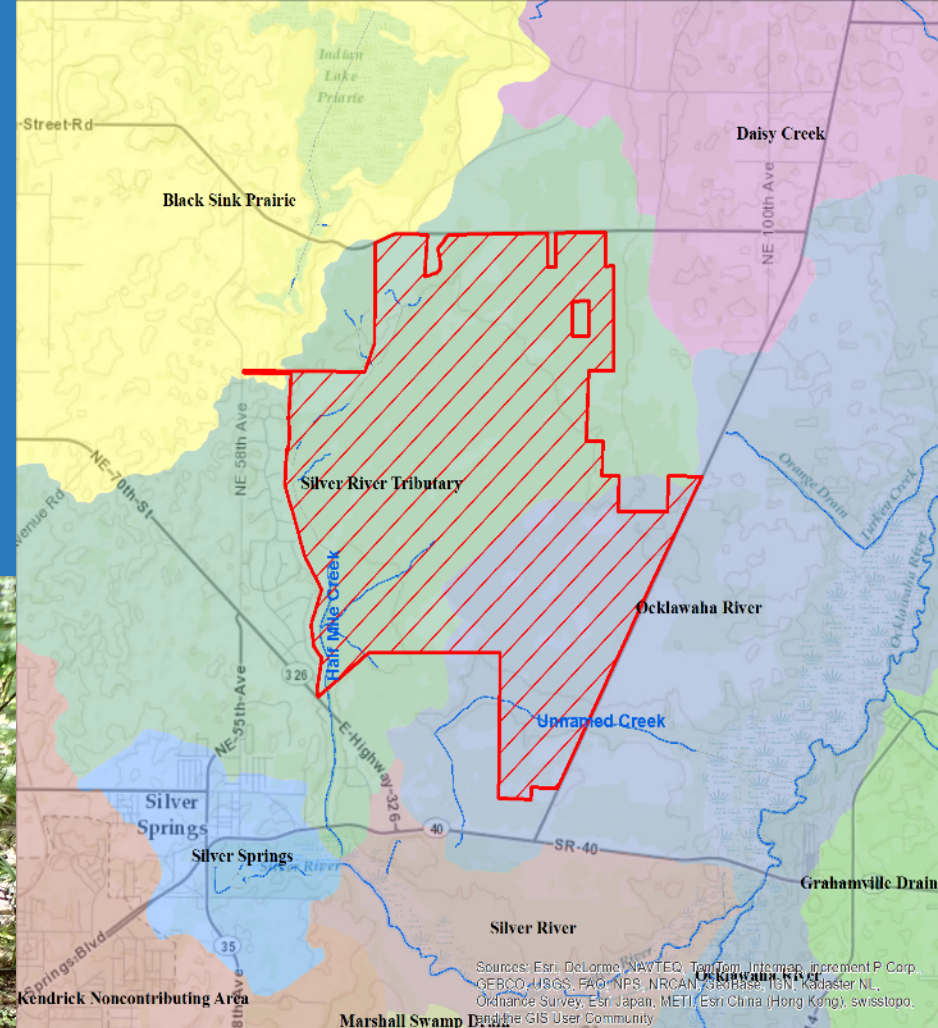
# Cost-Share Projects

## (2013-present)

Project	Benefit	Amount
Marion Co. Utilities Wastewater Relocation	Water Quality	\$100,000
Marion Co. Reuse to Spruce Creek G&CC	Water Quality and Supply	\$3,192,000
Marion Co. Toilet Rebate	Water Supply	\$90,000
Marion Co. Sleepy Hollow Package Plant Removal	Water Quality	\$309,000
Ocala Water Smart Software Pilot	Water Supply	\$75,000
Ocala WRF 2 Nutrient Reduction	Water Quality	\$3,840,000
Ocala Reuse Main Extension (Lillian Bryant/Croskey parks)	Water Supply	\$392,000
Ocala Parks Conversion to Reclaimed Water	Water Supply	\$40,395
Ocala Septic Tank Conversion	Water Quality	\$5,000,000

**Total = \$13,038,395**

# Silver Springs Forest Conservation Area



**Figure 6 - Hydrography  
Silver Springs Forest**



0 0.25 0.5 1 Miles  
1:60000

- ▬ Silver Springs Forest
- Drainage Basins**
- ▬ Black Sink Prairie
- ▬ Daisy Creek
- ▬ Grahamville Drain
- ▬ Kendrick Noncontributing Area
- ▬ Marshall Swamp Drain
- ▬ Oklawaha River
- ▬ Silver River
- ▬ Silver River Tributary
- ▬ Silver Springs

The St. Johns River Water Management District prepares and uses this information for its own purposes and this information may not be suitable for other purposes. This information is provided as is. Further documentation of this data can be obtained by contacting: St. Johns River Water Management District, Geographic Information Systems Program Management, P.O. Box 1428, 4048 Reid Street, Palatka, Florida 32178-1428. Tel: (386) 329-4176.



**St. Johns River**  
Water Management District

# Questions?



**Ann B. Shortelle, Ph.D.**  
***ashortelle@sjrwmd.com • (386) 329-4104***  
***floridaswater.com***