

# TOO FAR LAKE RESTORATION COMMITTEE

23 ACRE  
CLEANOUT

Outflow Canal/Gospel Island

Boundary II

Bed and Breakfast

Boundary

Outflow Canal/Open Water

Bed and Breakfast/Open Water

TOO FAR Clubhouse



## BACKGROUND

In 2007 the Citrus/Hernando Waterway Restoration Council requested \$4 million from the State Legislature for the Tsala Apopka Chain of Lakes to improve fisheries habitat and recreational user access by controlling aquatic vegetation, reducing floating tussocks, and removing accumulated bottom sediments.

The council also requested \$400,000 from the State Legislature for a diagnostic study of the Tsala Apopka Chain of Lakes.

A Diagnostic Survey was commissioned by the Florida Fish and Wildlife Conservation Commission which was completed in 2008. This was funded by the FWC.

The goals of the study were to:

1. Calculate the quantity of bottom sediment
2. Calculate the area and volume of generalized vegetation.
3. Analyze selected physical and chemical properties of sediments from the 15 lakes located within the chain
4. Categorize the vegetation in the 15 lakes.

The Citrus/Hernando Waterway Restoration Council has since been dissolved.

The TOO FAR club has the same desires.

Information obtained from this study were used to prioritize specific lakes and locations within the Tsala Apopka system for tussock harvesting and dredging projects.

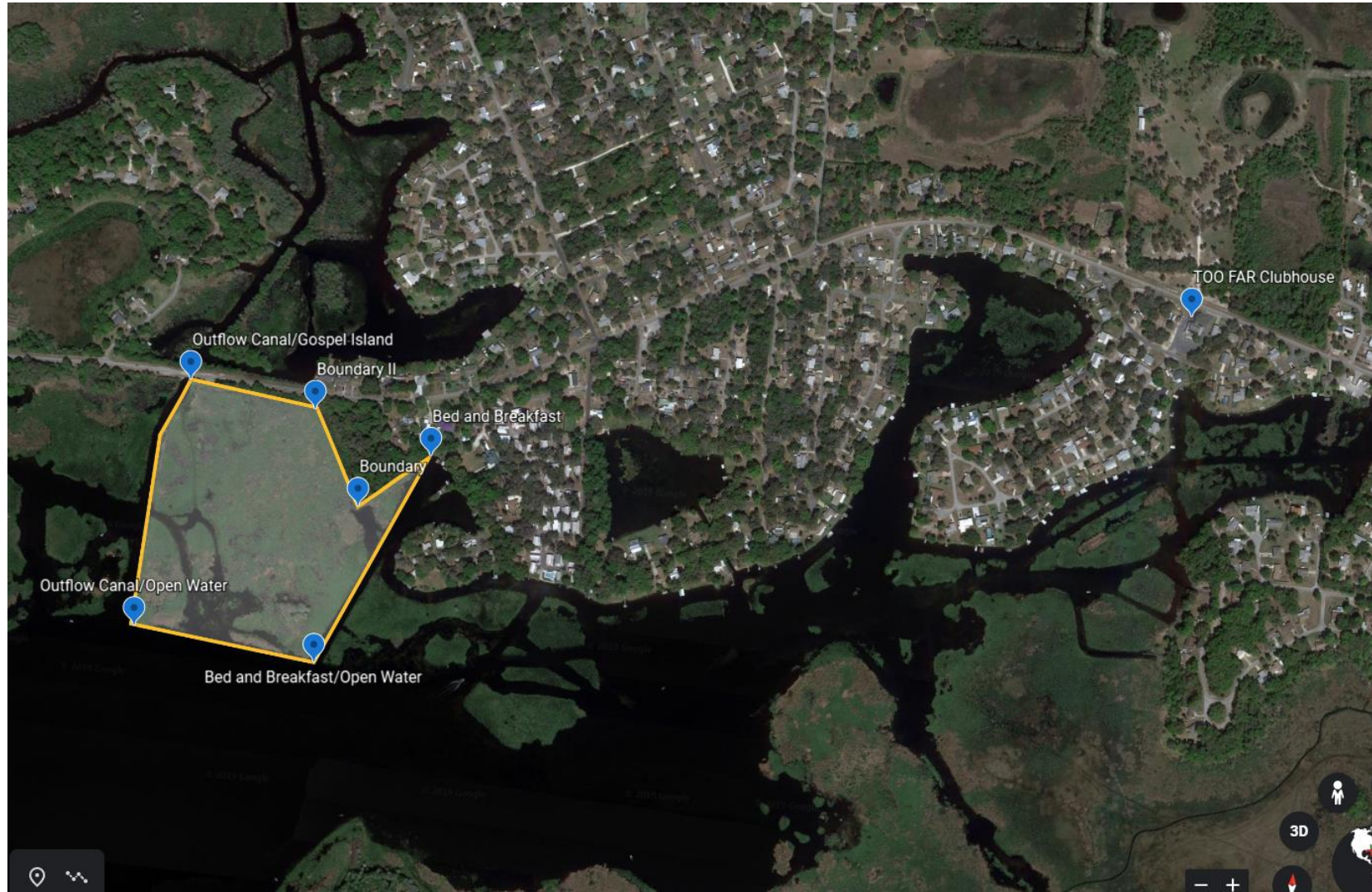
The TOO FAR restoration Committee chose a project based on the same criteria used by the CHWRC.

- 1.Improve fisheries habitat.
- 2.Improve recreational user access.
- 3.TOO FAR added criteria in that the project needed to be extremely visible to the public.



The project chosen by TOO FAR was chosen because:

1. Very visible
2. Easily accessible
3. Very few homeowners share the shoreline





Looking East From The Lake



Looking East From GI Bridge



Looking West From The lake



Looking West From the Bed and Breakfast



Looking North Towards GI Bridge From Lake



Site will be harvested, and a track hoe will be used to remove vegetation and muck.

Initial rough estimate for this project is \$1,250,000, to include studies, surveys, and permits and administration fees.

Some of the studies that might be required are:

- a. Area Survey
- b. Sediment Depth (cubic yards of removal)
- c. Water Quality
- d. Quantity of Nitrogen and Phosphorus in sediment to be removed
- e. Possible electrofishing survey by the FWC

We hope Citrus County will become a willing participant and partner in this project along with The Florida Fish and Wildlife Conservation Commission, The Southwest Florida Water Management District, The Florida Department of Environmental Protection, and United States Army Corp of Engineers.