

# Minimum Flows and Levels Silver Springs Rainbow River

WRWSA Board Meeting  
November 16, 2016



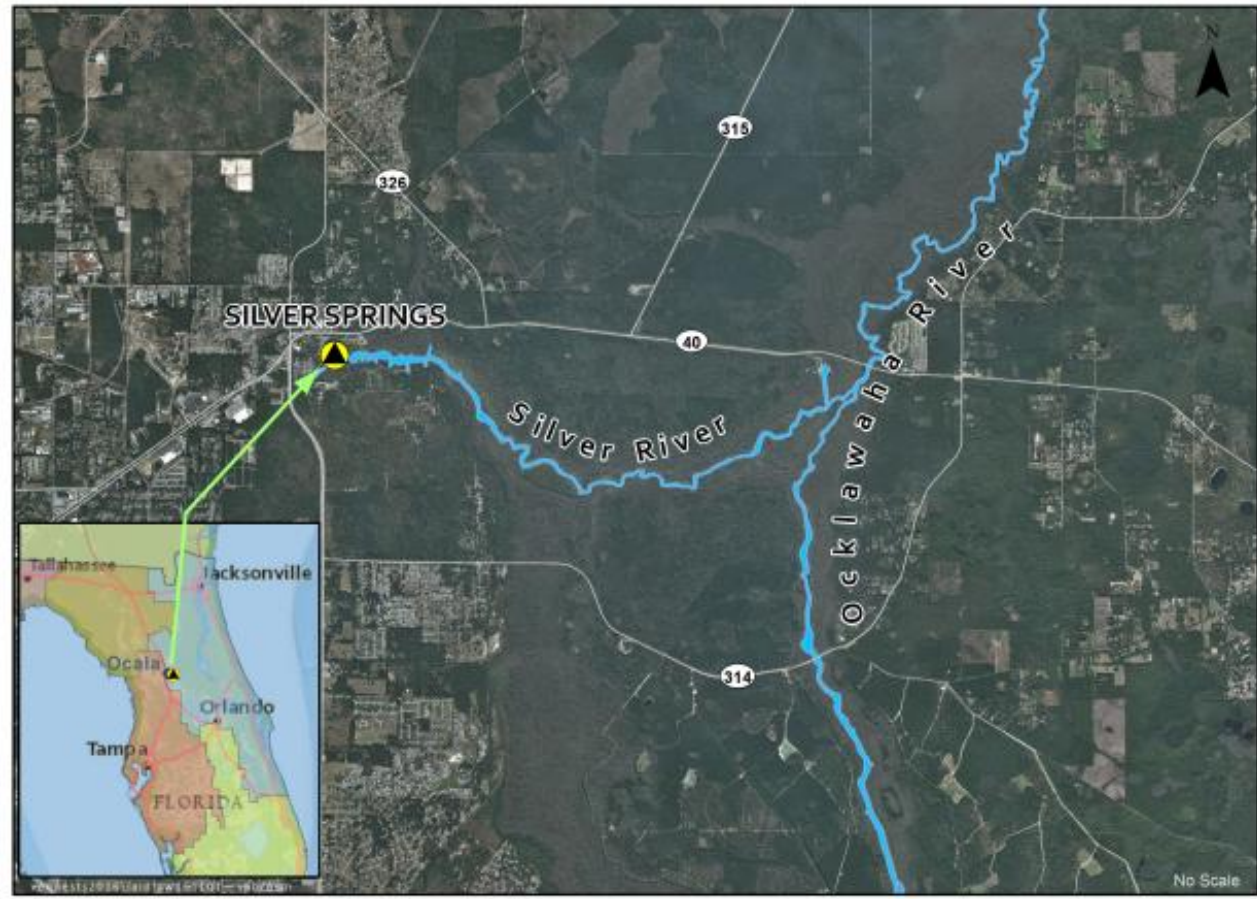
**St. Johns River Water Management District**



# **Silver Springs MFLs Determination**

September 29, 2016

**St. Johns River Water  
Management District**  
Bureau of Resource Evaluation  
& Modeling



### **Minimum Frequent High (828 cfs; 30 day; 5 year)**

- Maintenance of hardwood swamp vegetation composition and structure
- Maintenance of floodplain nutrient dynamic functions
- Maintenance of fish and wildlife habitat

### **Minimum Average (638 cfs; 180 day; 1.7 year)**

- Maintenance of biogeochemical cycles
- Maintenance of deep organic soil elevations

### **Minimum Frequent Low (575 cfs; 120 day; 3 year)**

- Maintenance of hardwood swamp vegetation composition and structure
- Maintenance of fish and wildlife habitat



## MFL Freeboard (Available Water)

	MFLs (cfs)	2010 condition (cfs)	Freeboard (cfs)
<b>MFH</b>	828	926	98
<b>MA</b>	638	657	19
<b>MFL</b>	575	592	17



# Proposed Minimum Flow for the Rainbow River System Prior to Independent Scientific Peer Review

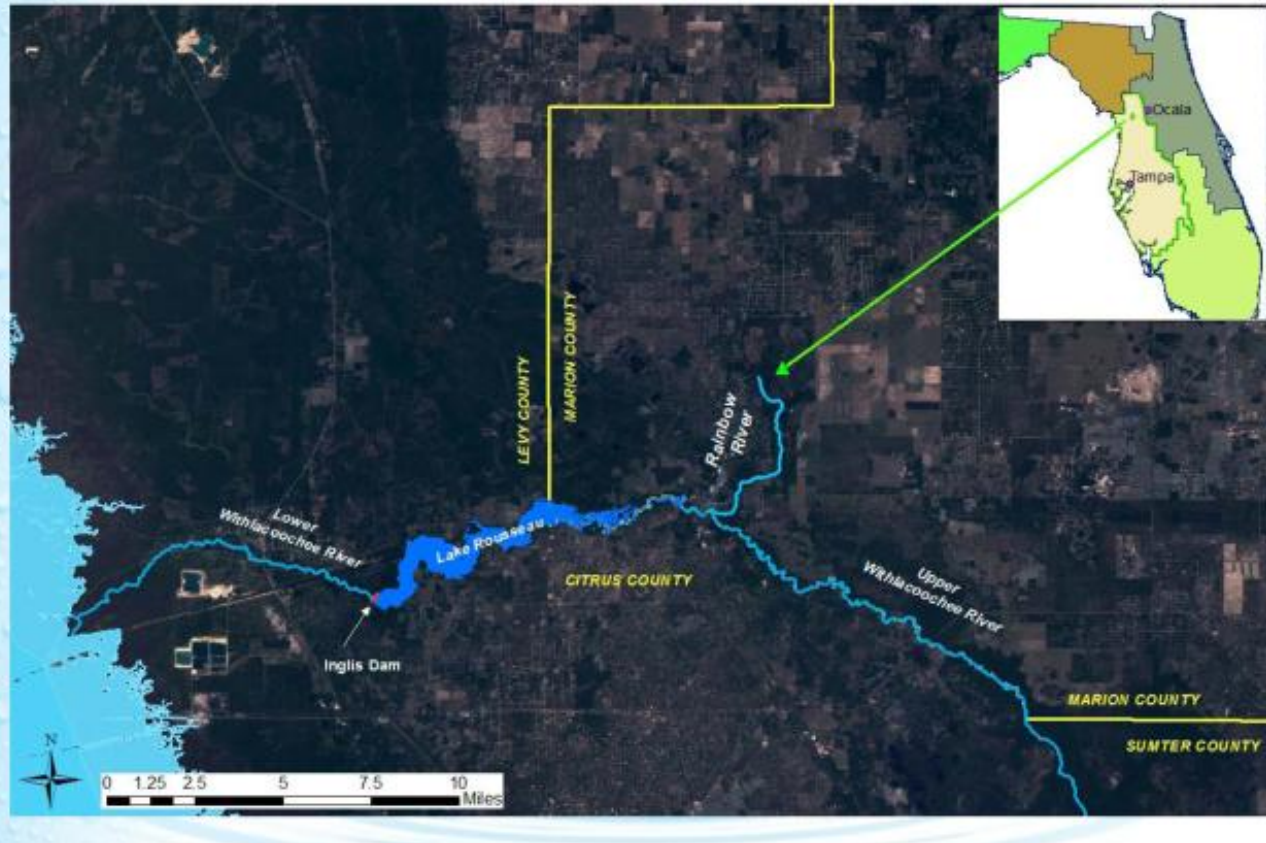
SWFWMD/SJRWMD Rainbow/Silver  
Monthly Coordination Meeting  
Status Update to Local Governments  
September 29, 2016

Kym Rouse Holzwart  
Senior Environmental Scientist

Southwest Florida  
*Water Management District*



# Location of Rainbow River System



## Recommended Minimum Flow

- Recommended minimum flow: 7% allowable flow reduction or 93% of natural flow
- Average of fish and woody habitat availability criteria (9%) and floodplain wetlands habitat inundation criterion (5%)
- No low-flow threshold needed
- Re-evaluate in 10 years
- Project in FY17 budget (\$400,000) that will evaluate factors affecting flows that will result in improved information and methods





# Minimum Flows and Levels Silver Springs Rainbow River

- SJR and SWF staff presentations at future Board meeting
- Staff recommendation: Information item only; no Board action needed.

